



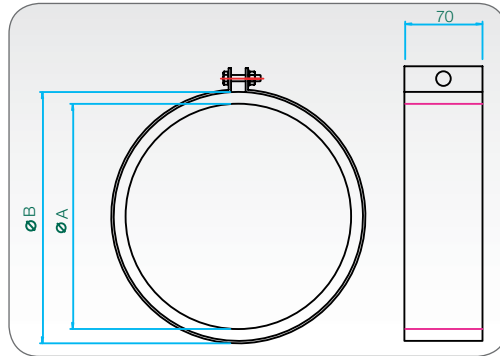
DEMAND CONTROL VENTILATION



## Accessories

### Fast Clamps

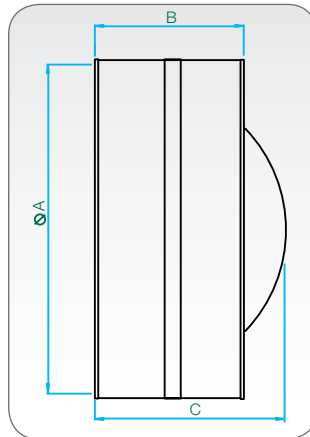
For fast, simple and secure connection of spigotted fans to circular ducts or ancillaries. Constructed from galvanised steel with a foam lining.



Product Code	Fan Dia. A	B	C	Weight kg
018-100-CLAMP	100	92	141	0.25
018-125-CLAMP	125	117	141	0.29
018-150-CLAMP	150	142	166	0.33
018-200-CLAMP	200	192	216	0.42
018-250-CLAMP	250	242	266	0.49
018-315-CLAMP	315	307	331	0.59
018-400-CLAMP	400	392	416	0.74
018-500-CLAMP	500	492	516	0.87

### Non-Return Dampers

Prevents the reverse flow of air whilst the fan is not operating, hence avoiding unpleasant draughts. Galvanised sheet steel case incorporate spring operated aluminium sheet blades.

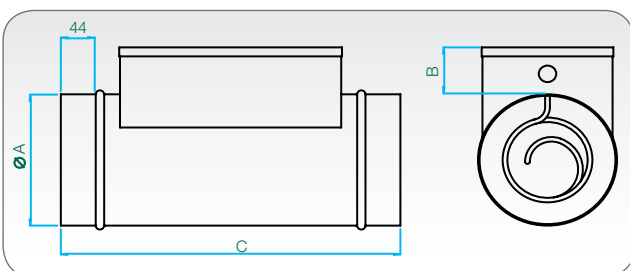


Product Code	Fan Dia. A	B	C	Weight kg
018-100-DAMPER	100	90	100	0.2
018-125-DAMPER	125	90	100	0.3
018-150-DAMPER	150	90	110	0.3
018-200-DAMPER	200	125	150	0.6
018-250-DAMPER	250	125	190	0.6
018-315-DAMPER	315	125	210	1.3

N.B. For 400 and 500 diameter selection contact Elta Fans.

### Electric Heater Batteries

Safe and clean heating with a maximum exit temperature of 40°C at 70% RH. Fitted with a manual reset high temperature cutout for safety. Casing is manufactured from galvanised sheet steel whilst elements are nickel chromium wire.



Product Code	KW	Air Flow @ m <sup>3</sup> /s		A	B	C	Weight kg
		Min	Max				
018-0125-HEAT-1	0.75	0.016	0.047	100	55	400	2
018-0125-HEAT-1	1.0	0.025	0.074	125	80	400	2
018-0150-HEAT-1	1.5	0.035	0.106	150	80	400	3
018-0200-HEAT-1	2.0	0.063	0.189	200	80	400	4
018-0250-HEAT-1	3.0	0.098	0.295	250	80	400	4
018-0315-HEA-1	4.5	0.156	0.468	315	80	400	5
018-0400-HEA-1	9.0	0.251	0.784	400	80	400	7

N.B. For 400 and 500 diameter selection contact Elta Fans.

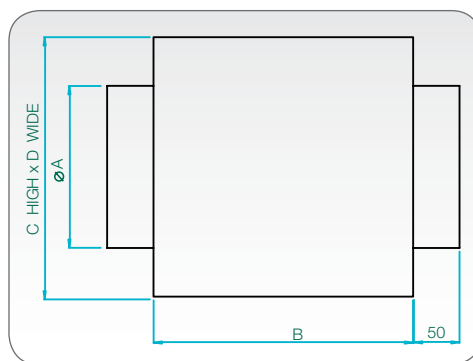
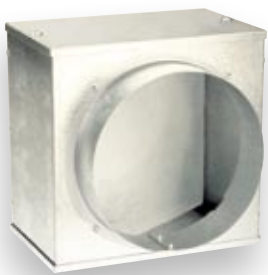


DEMAND CONTROL VENTILATION



## Panel Filters

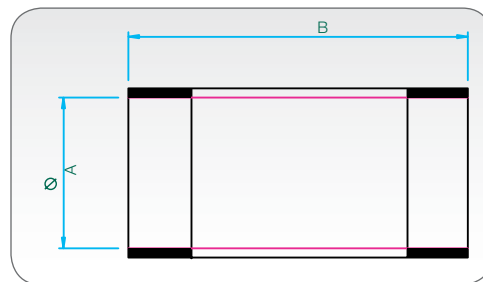
Easily accessed via a removable panel the filter is compliant with BS EN 779 rating G3 with 85% arrestance. The casing is constructed from galvanised sheet steel for longevity.



Product Code	Fan Dia. A	B	C	D	Weight kg
018-0100-FILT-P	100	155	200	200	2
018-0125-FILT-P	125	155	200	200	2
018-0150-FILT-P	150	155	250	250	2
018-0200-FILT-P	200	155	250	250	2
018-0250-FILT-P	250	200	300	300	3
018-0315-FILT-P	315	300	440	440	8
018-0400-FILT-P	400	400	440	440	8
018-0500-FILT-P	500	500	550	550	11

## Flexible Connectors

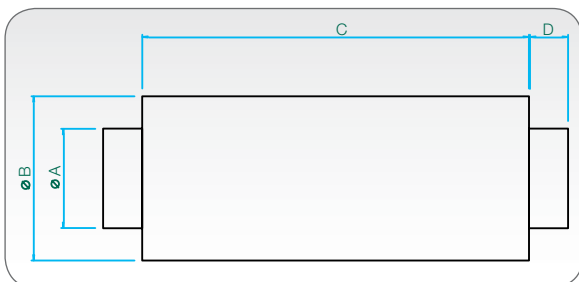
Fits directly onto the spigot to provide a flexible connection between the fan and duct or ancillaries. Constructed from galvanised sheet steel and PVC coated polyester.



Product Code	Fan Dia. A	B	Weight kg
018-0100-FLEX	100	150	0.2
018-0125-FLEX	125	150	0.2
018-0150-FLEX	150	150	0.2
018-0200-FLEX	200	150	0.3
018-0250-FLEX	250	1500	0.4
018-0315-FLEX	315	150	0.5
018-0400-FLEX	400	1500	0.7
018-0500-FLEX	500	150	1.0

## Silencers

To further reduce noise levels Elta's silencers are infilled with glass tissue faced high density mineral wool. The external casing is pre-galvanised sheet steel with perforated steel lining.



Product Code	Fan Dia.	A	B	C 1	C 2	C 3	C 4	D	Weight kg			
									1	2	3	4
068-0100-JF*	100	98	204	300	600	900	1200	40	2.5	4.6	6.7	8.7
068-0125-JF*	125	123	230						2.9	5.4	7.8	10.2
068-0150-JF*	150	148	255						3.4	6.1	8.9	11.6
068-0200-JF*	200	198	305						4.2	7.6	11.0	14.5
068-0250-JF*	250	248	355						5.0	9.1	13.2	17.3
068-0315-JF*	315	313	420						6.1	11.1	16.1	21.0
068-0400-JF*	400	398	505	7.5	13.6	19.8	25.9					

\* Add 1, 2, 3 or 4 depending on length required.  
N.B. For 400 and 500 diameter selection contact Elta Fans.

DEMAND CONTROL VENTILATION