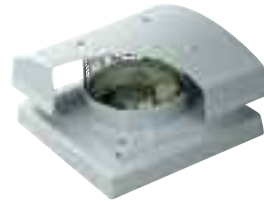


Skyflow SSF

Features & Benefits



The Skyflow SSF is a lightweight range of horizontal discharge roof extract units which balance the need to satisfy architects' modern day building needs against a low silhouette design. The Skyflow is UV stabilised for a durable, long lasting product, which delivers exceptional performance and noise characteristics.

- 10 standard sizes from 250mm to 800mm.
- Air volume flow rates of up to 4.7 m³/sec.
- Static pressures of up to 200 Pa.
- UV stabilized GRP cowl finished in goose wing grey.
- Supplied with fan or cowl only.
- Low silhouette design, aesthetic appearance.
- Highly efficient, lightweight induction motors.
- Suitable for operating temperatures of 50° C with speed controllers and 70° C Fixed speed.
- Motors protected to IP55 with Class F insulation.
- Fully speed controllable.
- Thermal overload protection.
- Suitable for curb or purlin mounting.
- Impellers are highly efficient aerofoil bladed section, produced from GRP, retained in an aluminium hub and balanced to Grade G6.3.
- Extensive stock range available.
- Optional colours available.

Features & Benefits

Material Strength – A robust and durable unit with the top cowl and fan support housing in UV stabilised GRP to provide a longer life, whilst the inlet guards are zinc plated and the fan plate and motor are powder coated epoxy paint finish.

Flexibility - The SSF can be supplied in kit form, with the cowl supplied separately to the fan, which means transportation to the installation site is made easier.

Time saving - Drop in silencers can be supplied which reduces installation time by fitting the silencers into the roof space rather than the ductwork – Less labour, less time and cost.

Mounting – SSF units are designed to be suitable for either curb or purlin mounting and can be mounted on flat or inclined roofs with a maximum pitch angle of 35°.

Quality impellers – Adjustable pitch aerodynamic impellers are provided with blades made from high quality GRP and factory set at an angle to maximize performance.

Easier maintenance - Lightweight and easily accessible at roof level, this simplifies cleaning and maintenance.

Design appeal – Roof units are supplied as standard in goose wing grey, with the option of any other RAL colour to comply with the overall design, profile and colour scheme for a building.

Reliability – Motors have sealed for life bearings.

Cost effective – The optional non return damper enables reductions in heat loss from the building when the SSF is not operating.

Motor protection – All SSF units have integral thermal overload protection which prevents the motor from overheating.

Ease of wiring – The electrical connection to the motor is made by an IP55 terminal box fitted to a 550mm flying lead from the units inlet side.

Tested to the very latest standards – SSF units are tested to ISO 5801:1997 (airside performance) and to BS 848 Pt 2:1985 (sound performance) at Elta Fans own test facility, meaning accurate, up to date information on performance and noise data that can be relied upon.

Quality assurance – All units are designed and manufactured with procedures as defined in BS EN ISO 9001: 2000.

Warranty – Each SSF Skyflow has a 12 month warranty.

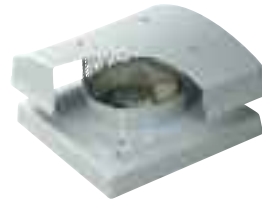
Full accessory range - Backdraught shutters, bird guards, purlin boxes, drop in silencers, speed controllers, inverters and soaker sheets.

Typical Applications

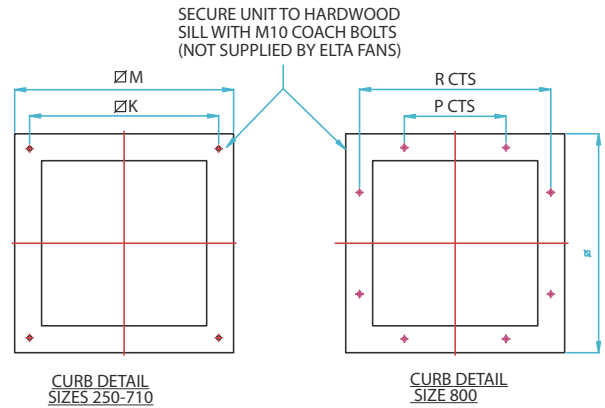
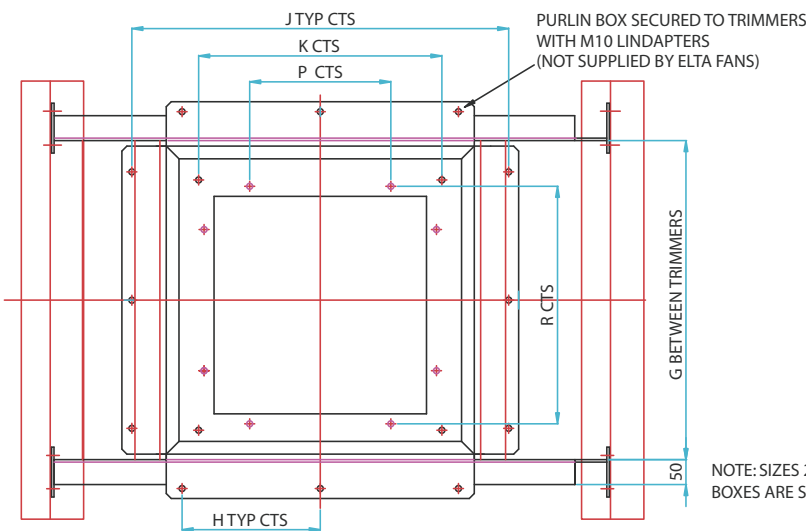
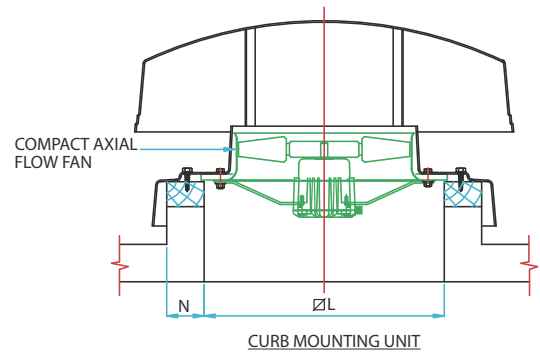
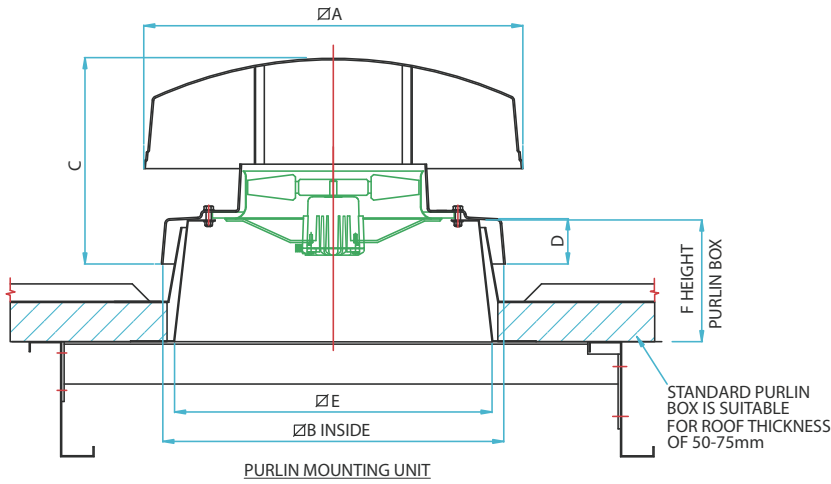
Libraries, hospitals, offices, banks, shops, small industrial units and retail parks.

Skyflow SSF

Dimensional Data



122



NOTE: SIZES 250 & 800 PURLIN BOXES ARE STRAIGHT SIDED

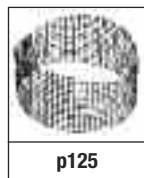
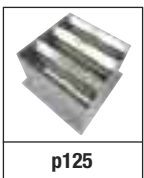
ROOF MOUNTED

Product Code*	A	B	C	D	E	F	G	H	J	K	L	M	N	P	R	Weight kg
SSF25	500	500	310	80	428	240	428	175	542	380	340	440	50	-	-	12
SSF31/35	710	684	365	85	610	240	636	250	750	500	460	610	75	-	-	19
SSF40/45	800	784	445	90	730	250	756	300	870	600	550	700	75	-	-	37
SSF50/56	960	934	510	100	860	250	886	350	1000	745	700	850	75	-	-	53
SSF63/71	1230	1054	590	105	1000	250	1026	435	1140	870	830	980	75	-	-	62
SSF80	1400	1174	670	100	1076	270	1076	470	1190	-	950	1100	75	406	990	64

* Product code for cowl only without fan.

N.B. Maximum weights are inclusive of largest fan but do not include purlin box.

Accessories



Skyflow SSF

Performance & Electrical Data



SINGLE Phase - 220V-240V / 50Hz

Product Code	Speed r/min	Airflow m³/s @ Static Pressure Pa.												Motor Electrical Data			Speed Control		Sound Level dBA @ 3m
		0	10	20	30	40	50	60	80	100	120	140	160	FLC Amps	SC Amps	Input kW	Electronic	Transformer	
SSF25/4-1	1455	0.26	0.24	0.23	0.21	0.19	0.18	0.15	0.12					0.90	1.45	0.09	EL31TK	TC12	43
SSF31/4-1	1390	0.50	0.48	0.46	0.43	0.41	0.38	0.35	0.28	0.19				0.90	1.45	0.09	EL31TK	TC12	46
SSF35/4-1	1330	0.65	0.62	0.60	0.57	0.54	0.50	0.47	0.39	0.30	0.21			0.90	1.45	0.09	EL31TK	TC12	53
SSF40/4-1	1375	1.09	1.06	1.02	0.99	0.96	0.92	0.89	0.80	0.67	0.48	0.37		1.80	3.60	0.25	EL31TK	TC14	54
SSF45/6-1	850	0.86	0.80	0.72	0.64	0.55	0.44	0.32	0.17					1.05	2.00	0.12	EL31TK	TC12	50
SSF45/4-1	1300	1.32	1.28	1.24	1.20	1.16	1.11	1.06	0.95	0.82	0.63	0.50		1.80	3.60	0.25	EL31TK	TC14	58
SSF50/6-1	860	1.22	1.15	1.09	1.03	0.96	0.88	0.77	0.46	0.33	0.25			1.55	3.50	0.18	EL31TK	TC14	52
SSF50/4-1	1350	1.88	1.83	1.79	1.74	1.70	1.65	1.61	1.51	1.42	1.31	1.20		3.60	10.8	0.55	EL61TK	TC18	60
SSF56/6-1	875	1.69	1.64	1.58	1.53	1.47	1.40	1.30	0.93	0.76	0.65			2.20	5.50	0.25	EL31TK	TC14	56
SSF56/4-1	1350	2.45	2.39	2.33	2.28	2.22	2.17	2.11	1.99	1.84	1.56	1.18		4.90	15.0	0.75	EL61TK	TC18	63
SSF63/6-1	850	2.40	2.35	2.29	2.22	2.16	2.09	2.02	1.84	1.53	1.17	1.01		6.00	12.6	0.55	EL101	TC18	59
SSF63/4-1	1310	3.50	3.43	3.36	3.29	3.21	3.12	3.03	2.84	2.62	2.36	2.04	1.64	7.90	19.8	1.10	-	TC110	67

N.B. Cowls can be ordered without fans, please refer to dimensional data for product code.

Sound levels are average spherical free field values at 50% peak pressure for comparative purposes only.

Silencer Data

Product Code	Silencer Attenuation & Pressure Drop Data					
	600L		900L		1200L	
	dBA	ΔP Pa	dBA	ΔP Pa	dBA	ΔP Pa
SSF25/4-1	-14	6	-17	7	-20	9
SSF31/4-1	-12	9	-15	11	-18	13
SSF35/4-1	-13	8	-17	11	-20	13
SSF40/4-1	-12	16	-17	20	-20	24
SSF45/6-1	-12	4	-17	5	-20	6
SSF45/4-1	-13	15	-18	18	-21	22
SSF50/6-1	-8	5	-13	6	-14	8
SSF50/4-1	-9	23	-14	29	-15	34
SSF56/6-1	-10	10	-16	12	-17	15
SSF56/4-1	-11	25	-16	31	-19	38
SSF63/6-1	-9	14	-14	17	-16	21
SSF63/4-1	-10	30	-16	38	-18	45

For explanation of silencer data see p107.

ROOF MOUNTED

Skyflow SSF

Performance & Electrical Data



124

THREE Phase - 380V-415V / 50Hz

Product Code	Speed r/min	Airflow m ³ /s @ Static Pressure Pa.														Motor Electrical Data			Speed Control	Sound Level dBA @ 3m	
		0	10	20	30	40	50	60	80	100	120	140	160	200	FLC Amps	SC Amps	Input kW	Transformer			
SSF31/4-3	1390	0.50	0.48	0.46	0.43	0.41	0.38	0.35	0.28	0.19							0.50	1.15	0.12	TC33	46
SSF35/4-3	1330	0.65	0.62	0.60	0.57	0.54	0.5	0.47	0.39	0.3	0.21						0.50	1.15	0.12	TC33	53
SSF40/4-3	1375	1.09	1.06	1.02	0.99	0.96	0.92	0.89	0.8	0.67	0.48	0.37					1.40	4.50	0.37	TC33	54
SSF45/6-3	850	0.86	0.79	0.73	0.66	0.58	0.50	0.39	0.14								0.68	1.70	0.18	TC33	50
SSF45/4-3	1300	1.30	1.26	1.22	1.18	1.14	1.09	1.05	0.95	0.82	0.65	0.51					1.40	4.50	0.37	TC33	58
SSF50/6-3	830	1.18	1.11	1.05	0.99	0.92	0.84	0.74	0.49	0.35							0.94	2.40	0.25	TC33	52
SSF50/4-3	1320	1.52	1.78	1.74	1.70	1.65	1.61	1.56	1.47	1.37	1.26	1.12	0.9				1.75	6.20	0.55	TC33	60
SSF56/6-3	830	1.64	1.58	1.53	1.47	1.41	1.34	1.23	0.92	0.76	0.65						0.94	2.40	0.25	TC33	56
SSF56/4-3	1320	2.39	2.34	2.29	2.23	2.18	2.12	2.06	1.93	1.77	1.43	1.19					2.00	7.50	0.75	TC35	63
SSF63/6-3	850	2.36	2.29	2.22	2.16	2.10	2.04	1.97	1.78	1.47	1.17						1.90	5.80	0.55	TC35	59
SSF63/4-3	1320	3.80	3.75	3.71	3.76	3.63	3.59	3.54	3.45	3.36	3.27	3.18	3.08	2.86			4.30	15.5	1.5	TC35	69
SSF71/6S-3	720	3.10	2.97	2.83	2.68	2.53	2.38	2.22									1.50	5.40	0.50	TC33	55
SSF71/6D-3	880	3.50	3.41	3.32	3.21	3.10	2.97	2.83	2.52								3.40	12.3	1.1	TC35	60
SSF71/4S-3	1380	4.77	4.66	4.55	4.44	4.32	4.19	4.06	3.78	3.45	3.06	2.61	2.18				4.30	15.5	1.5	TC35	69
SSF80/6S-3	620	3.85	3.69	3.51	3.33	3.14	2.95	2.75									1.50	5.40	0.50	TC33	52
SSF80/6D-3	820	4.72	4.61	4.49	4.36	4.21	4.06	3.90	3.59								3.40	12.3	1.1	TC35	67

N.B. Cowls can be ordered without fans, please refer to dimensional data for product code.

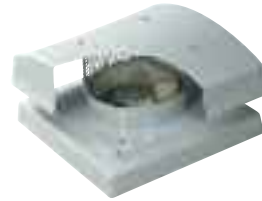
Sound levels are average spherical free field values at 50% peak pressure for comparative purposes only.

Silencer Data

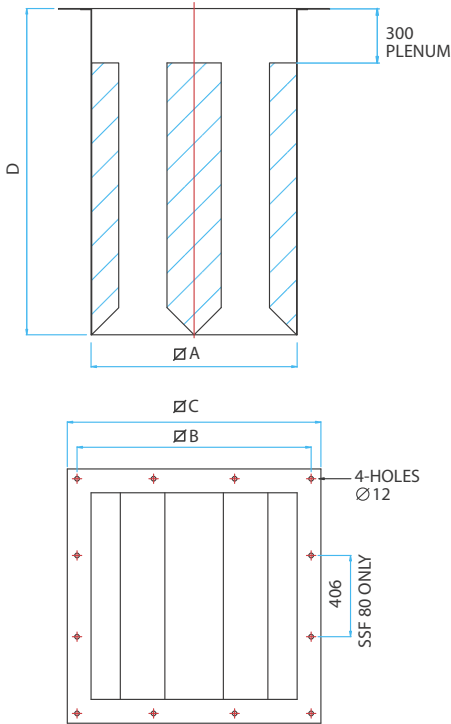
Product Code	Silencer Attenuation & Pressure Drop Data					
	600L		900L		1200L	
	dBA	ΔP Pa	dBA	ΔP Pa	dBA	ΔP Pa
SSF31/4-3	-12	9	-15	11	-18	13
SSF35/4-3	-13	8	-17	11	-20	13
SSF40/4-3	-12	16	-17	20	-20	24
SSF45/6-3	-12	5	-17	6	-20	7
SSF45/4-3	-13	14	-18	18	-21	21
SSF50/6-3	-8	6	-13	8	-14	10
SSF50/4-3	-9	20	-14	25	-15	30
SSF56/6-3	-10	9	-16	11	-17	14
SSF56/4-3	-11	24	-16	30	-19	36
SSF63/6-3	-9	13	-14	17	16	20
SSF63/4-3	-10	42	-16	53	-18	63
SSF71/6S-3	-10	16	-16	21	-18	25
SSF71/6D-3	-10	22	-16	28	-18	33
SSF71/4S-3	-10	32	-17	41	-19	48
SSF80/6S-3	-9	16	-15	20	-17	23
SSF80/6D-3	-8	25	-14	-31	-17	37

For explanation of silencer data see p107.

Skyflow SSF Accessories



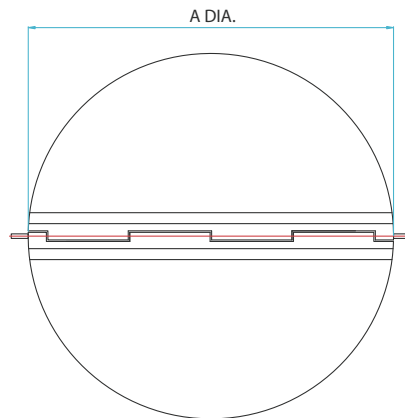
Drop In Silencers



Unit Size	Product Code	A	B	C	D	Airways	Weight kg
SSF25	068-SFDS-0600-E	320	380	440	600	2	10
	068-SFDS-0900-E				900		14
	068-SFDS-1200-E				1200		19
SSF31/35	068-SFDS-0600-A	440	500	600	600	2	15
	068-SFDS-0900-A				900		20
	068-SFDS-1200-A				1200		25
SSF40/45	068-SFDS-0600-B	530	600	650	600	2	17
	068-SFDS-0900-B				900		24
	068-SFDS-1200-B				1200		32
SSF50/56	068-SFDS-0600-C	670	745	800	600	2	23
	068-SFDS-0900-C				900		34
	068-SFDS-1200-C				1200		43
SSF63/71	068-SFDS-0600-D	810	870	940	600	3	27
	068-SFDS-0900-D				900		41
	068-SFDS-1200-D				1200		50
SSF80	068-SFDS-0600-F	830	990	1080	600	3	34
	068-SFDS-0900-F				900		50
	068-SFDS-1200-F				1200		65

- For information on silencers and an explanation of the data, see p107
- Baffle type silencers
- Galvanised steel casing with perforated steel lining and baffles
- Infill is glass tissue faced high density mineral wool

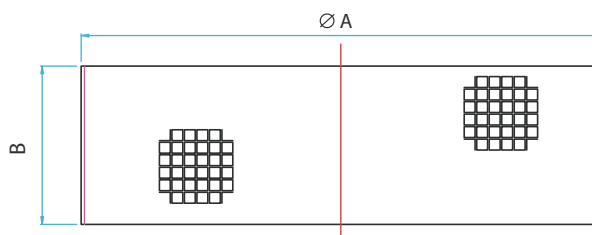
Backdraught Shutters



Product Code	A	Weight kg
039-SFSV-25	290	0.25
039-SFSV-31/35	382	0.28
039-SFSV-40/45	482	0.52
039-SFSV-50/56	598	0.70
039-SFSV-63/71	744	1.03
039-SFSV-80	844	1.62

- Prevents backdraught and reduces heat loss from building
- Finished in white A.B.S.

Bird Guard



Factory fitted options on request, add suffix to fan code
S - Shutter
B - Birdguard
BS - Birdguard + Shutter

Product Code	A	B	Weight kg
039-SFHBG-25	314	160	1
039-SFHBG-31/35	398	190	1
039-SFHBG-40/45	504	250	1
039-SFHBG-50/56	624	310	2
039-SFHBG-63/71	772	350	2
039-SFHBG-80	876	420	3

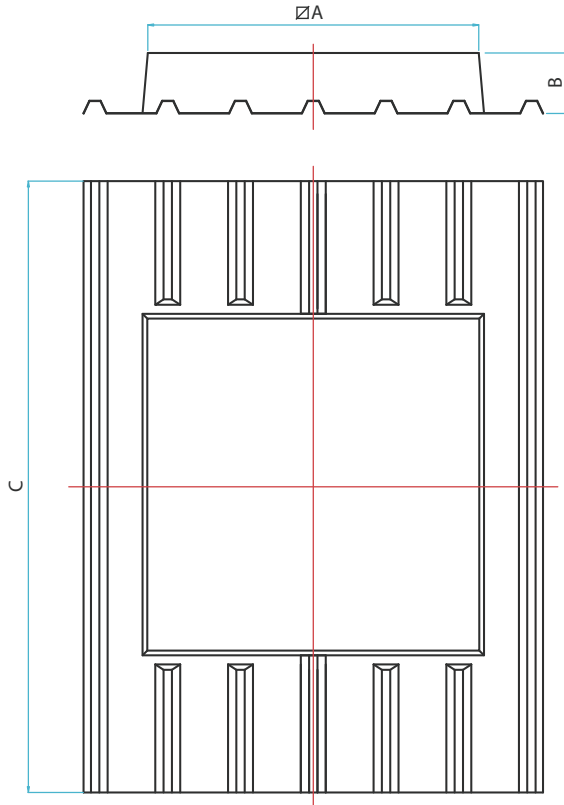
ROOF MOUNTED

Skyflow SSF Accessories



126

Soaker Sheets

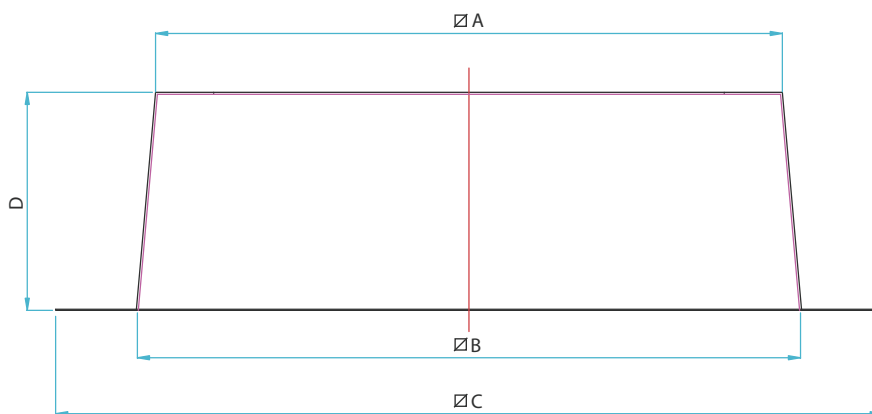


- Fire retardant glass reinforced plastic (GRP)
- UV stabilised

Product Code	A	B	C
039S-SP-25***	420	152	1830
039S-SP-31/35***	600	152	1830
039S-SP-40/45***	730	165	1830
039S-SP-50/56***	890	165	1830
039S-SP-63/71***	1010	165	1830
039S-SP-80***	1118	178	1830

*** Add soaker panel profile to part code
Weights dependant on profile

Purlin Boxes



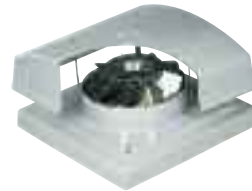
Product Code	A	B	C	D	Weight kg
039B-PB25	430	428	582	240	6
039B-PB31/35	570	610	790	240	9
039B-PB40/45	690	730	970	250	11
039B-PB50/56	820	860	1040	250	13
039B-PB63/71	960	1000	1180	250	15
039B-PB80	1080	1076	1230	270	17

- Pre-galvanised mild steel

ROOF MOUNTED

Skyflow SSMF

Features & Benefits



The Skyflow SSMF is a lightweight range of horizontal discharge mixed flow roof extract units which balance the need to satisfy architects modern day building needs against a low silhouette design. The Skyflow is UV stabilised for a durable, long lasting product, which delivers exceptional performance and noise characteristics.

- 7 standard sizes from 315mm to 630mm.
- Air volume flow rates of up to 3.9 m³/sec.
- Static pressures of up to 900 Pa.
- UV stabilised GRP cowl finished in goose wing grey.
- Supplied fully assembled with mixed flow fan.
- Low silhouette design, aesthetic appearance.
- Highly efficient, lightweight induction motors.
- Suitable for operating temperatures of 50° C with speed controllers and 70° C Fixed speed.
- Motors protected to IP55 with Class F insulation.
- Fully speed controllable.
- Thermal overload protection.
- Suitable for curb or purlin mounting.
- Bird Guards included.
- Extensive stock range available.
- Optional colours available.

Features & Benefits

Material Strength – A robust and durable unit with the top cowl and fan support housing in UV stabilised GRP to provide a longer life, whilst the inlet guards are zinc plated.

Aerodynamic appeal – The inherent aerodynamic benefits of good mixed flow impeller design provide marked advantages over conventional axial and centrifugal air performance characteristics.

Blade settings – Adjustable pitch mixed flow impellers have the blade angles factory set to meet the required duty.

Time saving - Drop in silencers can be supplied which reduces installation time by fitting the silencers into the roof space rather than the ductwork – Less labour, less time and cost.

Mounting – SSMF units are designed to be suitable for either curb or purlin mounting and can be mounted on flat or inclined roofs with a maximum pitch angle of 35°.

Quality impellers – Adjustable pitch mixed flow impellers are provided with blade angles set to meet the required duty. The impellers quality is reflected by natural aluminium finish spinings and pressings and zinc plated steel hub assemblies.

Easier maintenance - Lightweight and easily accessible at roof level, this simplifies cleaning and maintenance.

Design appeal – Roof units are supplied as standard in goose wing grey, with the option of any other RAL colour to comply with the overall design, profile and colour scheme for a building.

Reliability – Motors have sealed for life bearings.

Cost effective – The optional backdraught shutters enables reductions in heat loss from the building when the SSMF is not operating.

Motor protection – All SSMF units have integral thermal overload protection which prevents the motor from overheating.

Ease of wiring – The electrical connection to the motor is made by an IP55 terminal box fitted to a 550mm flying lead from the units inlet side.

Tested to the very latest standards – SSMF units are tested to ISO 5801:1997 (airside performance) and to BS 848 Pt 2:1985 (sound performance) meaning accurate, up to date information on performance and noise data that can be relied upon.

Quality assurance – All units are designed and manufactured with procedures as defined in BS EN ISO 9001: 2000.

Warranty – Each SSMF has a 12 month warranty.

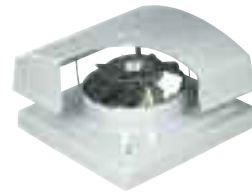
Full accessory range - Backdraught shutters, purlin boxes, drop in silencers, speed controllers, inverters and soaker sheets.

Applications

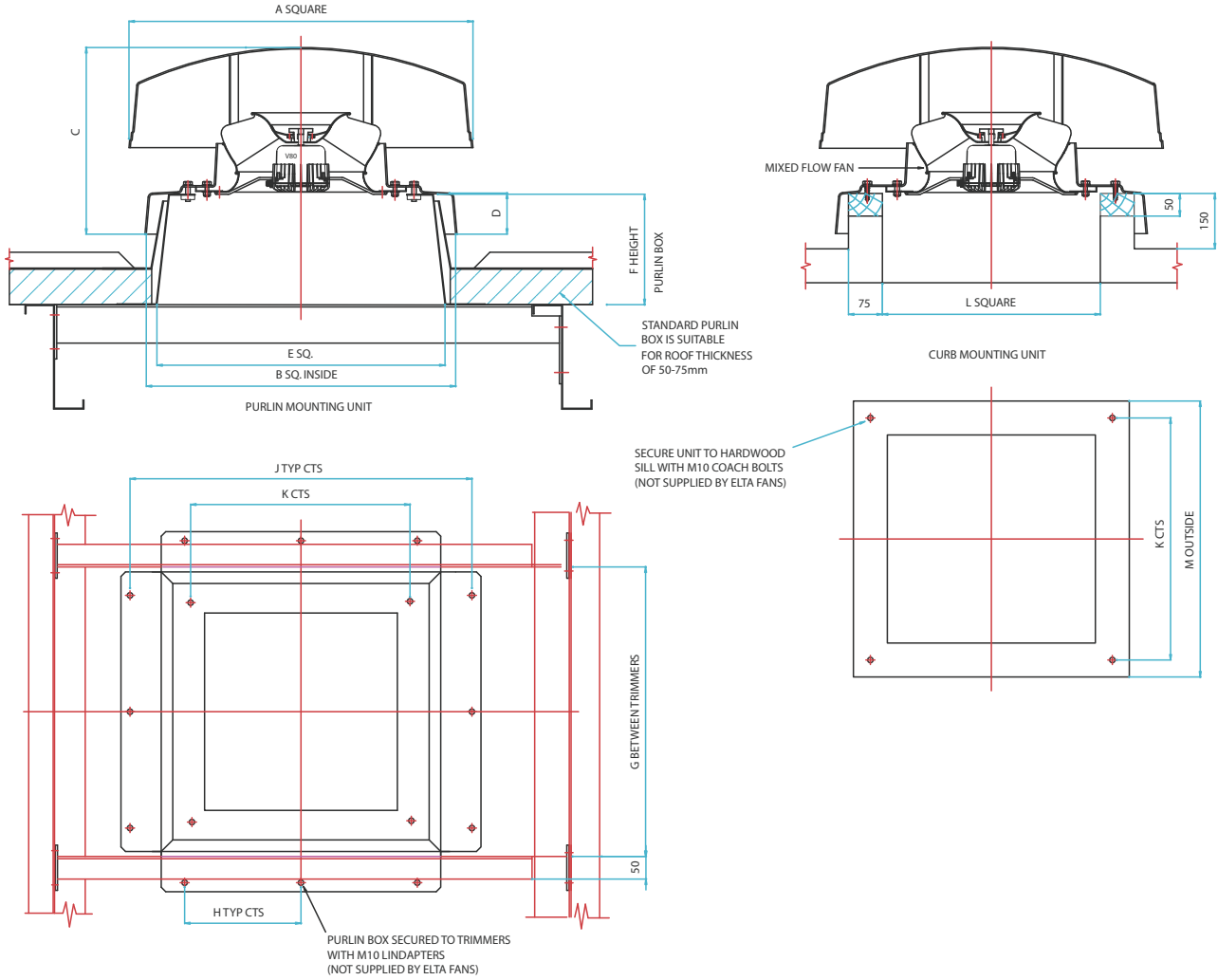
Libraries, hospitals, offices, banks, shops, small industrial units and retail parks.

Skyflow SSMF

Dimensional Data



128



ROOF MOUNTED

Product Code	A	B	C	D	E	F	G	H	J	K	L	M	Weight kg
SSMF31	710	684	325	85	610	240	636	250	750	500	460	610	20
SSMF35	800	784	445	90	730	250	756	300	870	600	550	700	25
SSMF40	800	784	445	90	730	250	756	300	870	600	550	700	27
SSMF45	960	934	510	100	860	250	886	350	1000	745	700	850	40
SSMF50	960	934	510	100	860	250	886	350	1000	745	700	850	42
SSMF56	1230	1054	590	105	1000	250	1026	435	1140	870	830	980	82
SSMF63	1230	1054	590	105	1000	250	1026	435	1140	870	830	980	90

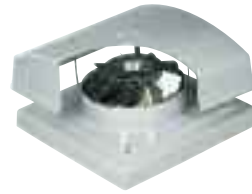
N.B. Weights only include skyflow roof unit, fan plate and impeller.

Accessories



Skyflow SSMF

Performance & Electrical Data



SINGLE Phase - 220V-240V / 50Hz

Product Code	Speed r/min	Airflow m ³ /s @ Static Pressure Pa.									Motor Electrical Data			Speed Control		Sound Level dBA @ 3m
		0	50	100	150	200	250	300	400	500	FLC Amps	SC Amps	Input kW	Electron-ic	Trans-former	
SSMF315/6-5-2	935	0.37	0.28	0.05							1.05	2.00	0.12	EL13TK	TC12	47
SSMF315/4-5-2	1395	0.58	0.52	0.46	0.38	0.24					1.80	3.60	0.25	EL13TK	TC14	58
SSMF350/6-5-2	885	0.64	0.52	0.34							1.05	2.00	0.12	EL13TK	TC12	50
SSMF350/4-4-2	1300	0.94	0.86	0.77	0.66	0.53	0.22				1.80	3.60	0.25	EL13TK	TC14	60
SSMF400/6-5-2	820	0.78	0.64	0.46	0.10						1.05	2.00	0.12	EL13TK	TC12	51
SSMF400/4-5-2	1330	1.18	1.11	1.04	0.95	0.86	0.75	0.60	0.19		3.60	10.8	0.55	EL16TK	TC18	64
SSMF450/6-5-2	935	1.28	1.13	0.97	0.78	0.53	0.18				6.00	12.6	0.55	EL16TK	TC18	55
SSMF450/4-4-2	1290	1.65	1.54	1.43	1.31	1.18	1.04	0.87	0.42	0.05	4.90	15.0	0.75	EL16TK	TC18	64
SSMF500/6-5-2	890	1.60	1.43	1.25	1.03	0.78	0.45	0.08			6.00	12.6	0.55	EL101	TC18	58
SSMF560/6-3-2	875	2.00	1.82	1.62	1.39	1.09	0.70	0.26			6.00	12.6	0.55	EL101	TC18	60

Sound levels are average spherical free field values at 50% peak pressure for comparative purposes only.

THREE Phase - 380V-415V / 50Hz

Product Code	Speed r/min	Airflow m ³ /s @ Static Pressure Pa.											Motor Electrical Data			Speed Control	Sound Level dBA @ 3m
		0	50	100	150	200	250	300	400	500	700	900	FLC Amps	SC Amps	Input kW	Trans-former	
SSMF315/6-5-3	955	0.38	0.28										0.68	1.70	0.18	TC33	47
SSMF315/4-5-3	1415	0.59	0.53	0.46	0.37	0.25							1.40	4.50	0.37	TC33	59
SSMF350/6-5-3	920	0.70	0.59	0.41									0.68	1.70	0.18	TC33	50
SSMF350/4-5-3	1330	0.93	0.86	0.77	0.67	0.54	0.34						1.40	4.50	0.37	TC33	60
SSMF400/6-5-3	855	0.83	0.69	0.52	0.24								0.68	1.70	0.18	TC33	52
SSMF400/4-5-3	1460	1.37	1.30	1.22	1.14	1.05	0.95	0.83	0.51	0.12			2.00	7.50	0.75	TC33	66
SSMF450/6-5-3	910	1.24	1.07	0.89	0.67	0.38	0.09						0.94	2.40	0.25	TC33	55
SSMF450/4-4-3	1380	1.79	1.67	1.55	1.44	1.32	1.20	1.06	0.73	0.30			2.00	7.50	0.75	TC33	64
SSMF500/6-5-3	920	1.69	1.51	1.32	1.12	0.87	0.56	0.19					2.00	6.20	0.55	TC33	59
SSMF500/4-4-3	1390	2.40	2.30	2.19	2.07	1.95	1.82	1.68	1.37	1.01	0.16		4.30	15.5	1.5	TC310	68
SSMF560/6-3-3	910	2.09	1.90	1.70	1.48	1.20	0.86	0.49					2.00	6.20	0.55	TC33	61
SSMF560/4-2-3	1390	2.77	2.67	2.57	2.45	2.34	2.22	2.08	1.78	1.39	0.30		4.30	15.5	1.5	TC310	70
SSMF560/4-4-3	1435	3.87	3.74	3.61	3.47	3.34	3.20	3.05	2.74	2.38	1.38	0.31	6.78	47.5	3.0	TC310	71
SSMF630/6-3-3	965	3.52	3.31	3.09	2.85	2.60	2.33	2.03	1.30	0.43			5.36	30.5	2.2	TC310	67

Sound levels are average spherical free field values at 50% peak pressure for comparative purposes only.

Silencer Data - SINGLE Phase

Product Code	Silencer Attenuation & Pressure Drop Data					
	600L		900L		1200L	
	dBA	ΔP Pa	dBA	ΔP Pa	dBA	ΔP Pa
SSMF315/6-5-2	-8	5	-10	6	-12	7
SSMF315/4-5-2	-9	12	-12	15	-14	18
SSMF350/6-5-2	-8	9	-10	12	-12	14
SSMF350/4-4-2	-9	20	-12	25	-14	29
SSMF400/6-5-2	-8	7	-11	8	-12	10
SSMF400/4-5-2	-8	15	-10	19	-12	22
SSMF450/6-5-2	-9	10	-12	13	-13	15
SSMF450/4-4-2	-10	15	-13	19	-15	23
SSMF500/6-5-2	-8	10	-11	12	-13	14
SSMF560/6-3-2	-8	10	-12	13	-13	16

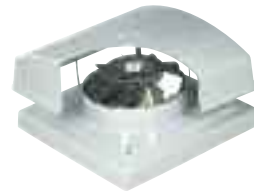
For explanation of silencer data see p107.

Silencer Data - THREE Phase

Product Code	Silencer Attenuation & Pressure Drop Data					
	600L		900L		1200L	
	dBA	ΔP Pa	dBA	ΔP Pa	dBA	ΔP Pa
SSMF315/6-5-3	-8	5	-10	7	-12	8
SSMF315/4-5-3	-9	11	-12	14	-15	17
SSMF350/6-5-3	-8	12	-10	15	-12	18
SSMF350/4-5-3	-8	20	-11	25	-13	30
SSMF400/6-5-3	-8	7	-11	9	-12	10
SSMF400/4-5-3	-10	20	-13	25	-15	30
SSMF450/6-5-3	-9	8	-12	11	-14	13
SSMF450/4-4-3	-9	18	-13	22	-15	26
SSMF500/6-5-3	-9	11	-12	13	-13	16
SSMF500/4-4-3	-9	21	-14	26	-15	31
SSMF560/6-3-3	-9	10	-13	12	-14	14
SSMF560/4-2-3	-10	20	-16	26	-18	31
SSMF560/4-4-3	-10	36	-16	45	-18	53
SSMF630/6-3-3	-9	18	-14	23	-15	27

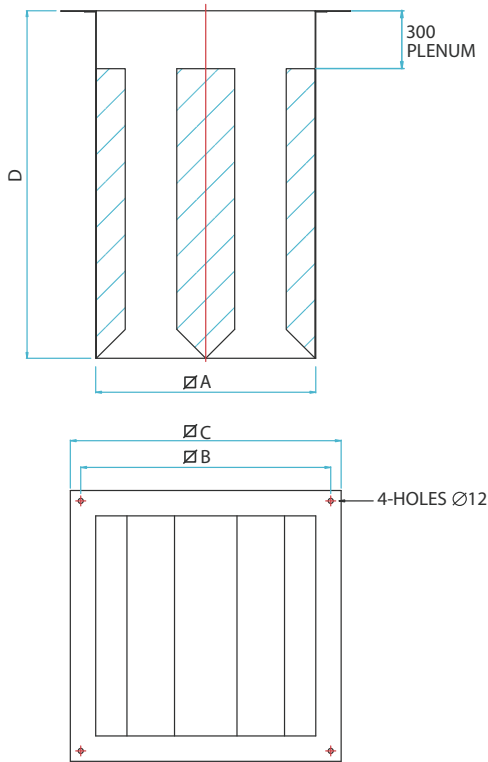
ROOF MOUNTED

Skyflow SSMF Accessories



130

Drop In Silencers

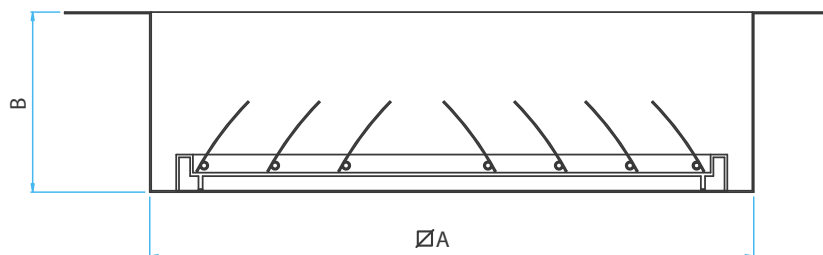


- For information on silencers and an explanation of the data, see p107
- Baffle type silencers
- Galvanised steel casing with perforated steel lining and baffles
- Infill is glass tissue faced high density mineral wool

Unit Size	Product Code	A	B	C	D	Airways	Weight kg
SSMF31	068-SFDS-0600-A	440	500	600	600	2	15
	068-SFDS-0900-A				900		20
	068-SFDS-1200-A				1200		25
SSMF35	068-SFDS-0600-B	530	600	650	600	2	17
	068-SFDS-0900-B				900		24
	068-SFDS-1200-B				1200		32
SSMF45/50	068-SFDS-0600-C	670	745	800	600	2	23
	068-SFDS-0900-C				900		34
	068-SFDS-1200-C				1200		43
SSMF56/63	068-SFDS-0600-D	810	870	940	600	3	27
	068-SFDS-0900-D				900		41
	068-SFDS-1200-D				1200		50

Backdraught Shutters

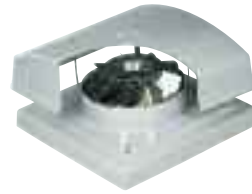
ROOF MOUNTED



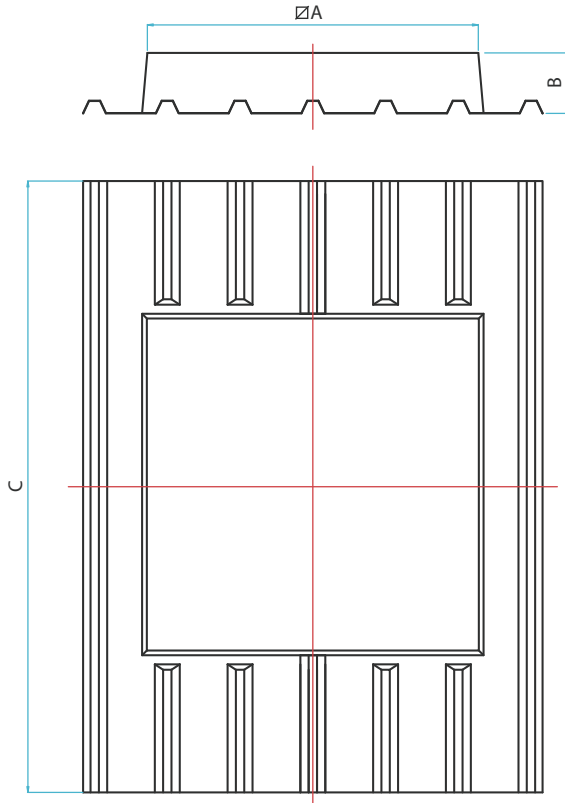
Unit Size	Product Code	A	B	Weight kg
SSMF315	SSMF-SHUT-31	434	130	3.5
SSMF350	SSMF-SHUT-35-40	534	130	5.0
SSMF400				
SSMF450	SSMF-SHUT-45/50	677	230	8.0
SSMF500				
SSMF560	SSMF-SHUT-56/63	780	300	11.5
SSMF630				

- Prevents backdraught and reduces heat loss from building
- Polypropylene shutter in pre-galvanised steel frame

Skyflow SSMF Accessories



Soaker Sheets

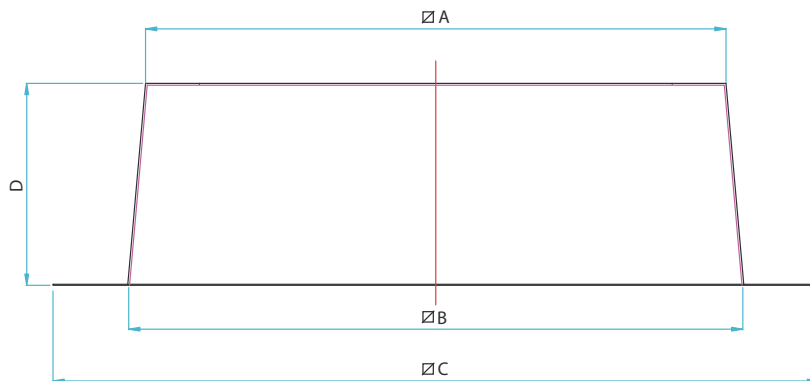


- Fire retardant glass reinforced plastic (GRP)
- UV stabilised

Unit Size	Product Code	A	B	C
SSMF31	039S-SP-31/35***	600	152	1830
SSMF35/40	039S-SP-40/45***	730	165	1830
SSMF45/50	039S-SP-50/56***	890	165	1830
SSMF56/63	039S-SP-63/71***	1010	165	1830

*** Add soaker panel profile to part code
Weights dependant on profile.

Purlin Boxes



Unit Size	Product Code	A	B	C	D	Weight kg
SSMF31	039B-PB31/35	570	610	790	240	9
SSMF35/40	039B-PB40/45	690	730	970	250	11
SSMF45/50	039B-PB50/56	820	860	1040	250	13
SSMF56/63	039B-PB63/71	960	1000	1180	250	15

- Pre-galvanised mild steel

ROOF MOUNTED

Miniflow SMF

Features & Benefits



132

The Miniflow SMF range is an axial powered roof extract unit specifically developed to meet the airflow requirements of small to medium sized applications.

- 3 standard sizes, 130mm to 300mm.
- Air Volume flow rates of up to 0.59 m³/sec.
- Static Pressures of up to 200 Pa.
- Can be mounted at angles up to 30°.
- Motors are IP44 with Class B insulation.
- Supply air units can be supplied.
- Unit can be supplied as cowl only.
- Motors and impeller balanced to quality class G6.3.
- Steel components have a corrosion resistant finish.
- Cowls are of UV stabilized plastic.
- Motors are squirrel cage induction type.
- Suitable for operating temperatures of up to 50° C.

Features & Benefits

Reliability – Motors have sealed for life bearings.

Performance – All SMF axial fans are powered by an external rotor motor.

Motor protection – The SMF132 is impedance protected. All other models SMF202 – SMF306 have integral thermal overload protection which prevents the motor from overheating.

Speed controllable – Each fan is suitable for speed control with an electronic controller, which means the airflow can be altered to suit site conditions.

Mounting – Designed for roof mounting, SMF units can be mounted on roof slopes of up to 30°.

Material finish – SMF cowls are manufactured from UV-Stabilized plastic with built in terminal box, providing durability and strength, with all steel components, including fan, fan housing and brackets in a corrosion resistant finish.

Full Ancillary range – Speed controllers, backdraught shutters and cowl only.

Tested to the very latest standards – SMF units are tested to ISO 5801:1997 (airside performance) and to BS 848 Pt 2:1985 (sound performance) meaning accurate, up to date information on performance and noise data that can be relied upon.

Quality assurance – All units are designed and manufactured with procedures as defined in BS EN ISO 9001: 2000.

Warranty – Each SMF has a 12 month warranty.

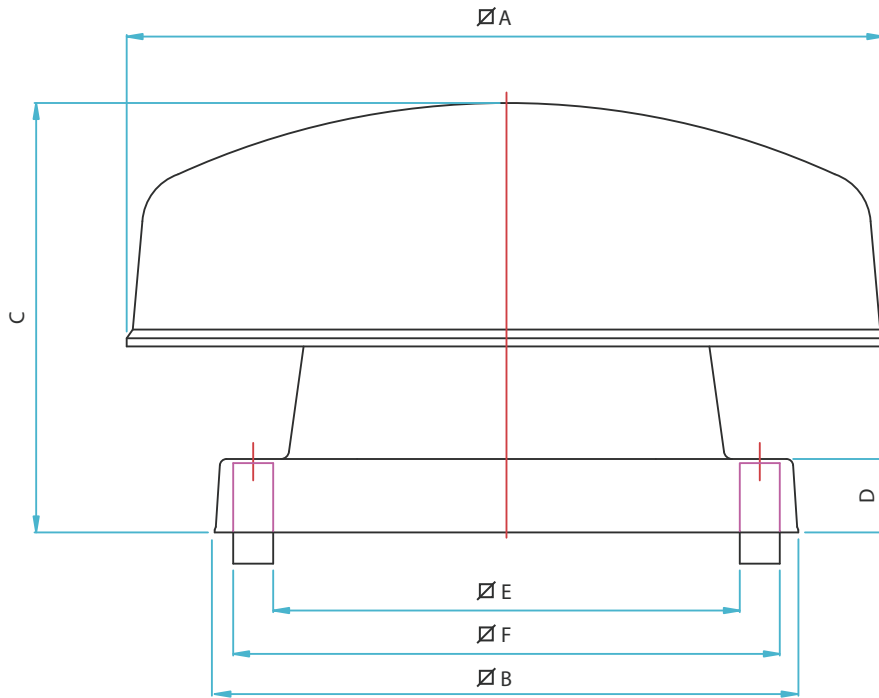
Applications

Changing rooms, toilets, bathrooms and shower rooms.

ROOF MOUNTED

Miniflow SMF

Dimensional Data



Product Code	Cowl Only	A	B	C	D	E	F	Weight kg
SMF132E	SMF13	310	276	200	30	200	250	1.9
SMF204E								4.5
SMF202E								4.6
SMF254E								6.1
SMF252E	SMF20/30	570	430	350	60	350	410	5.9
SMF306E								6.5
SMF304E								6.5
SMF302E								6.9

N.B. Weights include miniflow roof unit and fan.

ROOF MOUNTED

Accessories



Miniflow SMF

Performance & Electrical Data



134

SINGLE Phase - 220V-240V / 50Hz

Product Code	Speed r/min	Airflow m ³ /s @ Static Pressure Pa.										Motor Electrical Data		Speed Control	Sound Level dBA @ 3m
		0	25	50	75	100	125	150	175	200	FLC Amps	Input Watts			
SMF132E	2760	0.08	0.08	0.06	0.05	0.03						0.25	40	EL31	43
SMF204E	1440	0.09	0.07	0.04	0.02							0.13	30	EL31	38
SMF202E	2580	0.22	0.20	0.16	0.12	0.10	0.09	0.07	0.06			0.35	70	EL31	50
SMF254E	1380	0.25	0.21	0.16	0.11	0.06						0.29	58	EL31	42
SMF252E	2520	0.39	0.35	0.31	0.27	0.22	0.19	0.15	0.12	0.08		0.54	118	EL31	52
SMF306E	960	0.28	0.23	0.13	0.04							0.23	45	EL31	39
SMF304E	1320	0.43	0.34	0.26	0.19	0.13	0.07					0.45	50	EL31	44
SMF302E	2460	0.59	0.57	0.53	0.49	0.43	0.37	0.30	0.24	0.16		0.71	160	EL31	55

Sound levels are average spherical free field values at 50% peak pressure for comparative purposes only.

ROOF MOUNTED

Pressure Recovery

DO NOT!

To determine the system resistance the discharge losses have to be added before selecting the fan.

Discharge losses are highest in this arrangement and are equivalent to one velocity head.

DO!

With a correctly designed discharge diffuser the pressure recovery in the diffuser will reduce the system total pressure.

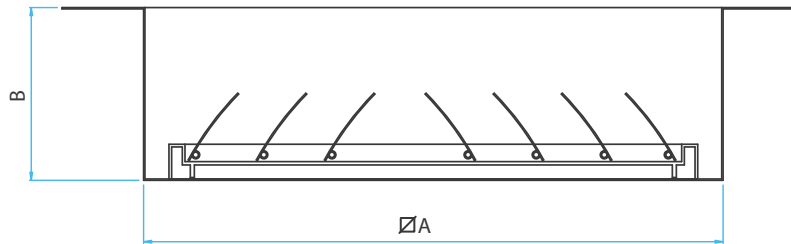
Included angle of diffuser to be 15° or less.

Discharge losses reduced by up to 75° in this arrangement.

Miniflow SMF Accessories



Backdraught Shutters



Unit Size	Product Code	A	B	Weight kg
SMF20/30	SKCBD-B	300	65	3.0

- Prevents backdraught and reduces heat loss from building
- Polypropylene shutter in pre-galvanised steel frame

• For SMF13 contact Elta Fans

Motor Overload Protection

All wiring must be carried out in accordance with the latest electrical regulations and by suitably qualified and competent personnel.

It is a requirement of the Electrical Regulations to provide a means of protection against overload of a motor with a motor rating exceeding 0.37kW.

Due to the costs associated with replacing a motor and the on site down time, motor protection is of prime importance. Increased temperatures within the motor windings can result in damage to the insulation and a reduction in life expectancy; this can be reduced by as much as 50% for a small rise in temperature.

Typical causes of overheating are phase reversal, single phasing (the loss of one phase to a motor from a three phase supply), unbalanced voltages, overloading from excessive circuit current, abnormal increase in ambient temperature, vibration and stalling.

There are now many methods to provide protection to a motor; however the most common remains the use of a thermal overload relay, this contains a bi – metal or fusible device which open the contacts of a contactor to remove the power supply to the motor.

An improved method is to use a thermal device imbedded in the motor windings. This provides added protection against overheating which is not based on an increase of current. Examples being a reduction of airflow across the motor, detritus accumulating on the motor and excessive air temperature across the motor.

It must be noted that fuses / circuit breakers are used to provide short circuit protection; a motor overload will provide protection at lower currents that would not be detected by a short circuit protection device but still a high enough current to damage the motor.

Singleflow SSDR & SSBR

Features & Benefits



136

The Singleflow SSDR and SSBR is a range of direct and belt driven centrifugal fans for external roof mounting, manufactured in aluminium alloy with a mill finish and a louvred air discharge to protect against rain and bird ingress. Ideal for external mounting on roof tops where ceiling voids and roof spaces are inadequate or the unit is too large to fit internally, they are available with or without acoustic lining dependant on whether lower breakout noise levels are required.

- SSSDR & SSBR air volume flow rates of 1.41 m³/s and 2.7 m³/s respectively.
- SSSDR & SSBR static pressures of between 400 Pa and 600 Pa respectively.
- SSSDR has 7 standard sizes.
- SSBR has 4 standard sizes.
- Robust mill finish aluminium alloy casing.
- Supplied with or without acoustic lining.
- Double inlet, double width, forward curved centrifugal fan.
- Single speed squirrel cage induction motor.
- Louvred air discharge guard.
- Pre wired to IP55 isolator.
- Suitable for operating temperatures of up to 40°C (SSDR) and 50°C (SSBR).
- In built vibration isolation.
- Lower noise levels.

Features & Benefits

Material Strength – This robust and durable unit has a casing manufactured from mill finish aluminium alloy, with a louvred air discharge which provides protection against ingress from the elements and is self draining.

Reliability – Motors have sealed for life bearings.

Low noise - Single fans have the option of being acoustically lined with Class O acoustic foam so that breakout noise levels are significantly lowered.

Alternative - Alternative position of the intake spigot can be fitted on the end of the unit when the ventilation riser is not directly under the unit, this allows the unit to be fixed adjacent to ducting.

Adjustable - SSBR Belt driven options provide the flexibility to change duties via belt and pulley changes to match the system requirements, easily adjustable on site.

Design appeal – Anti-vibration mounts are fitted between the motor mounting arms and the fan casing which ensures smooth running.

Quality impellers – Either direct or belt driven double inlet, double width forward curved centrifugal impellers, housed in a purpose designed scroll with integral deep drawn inlet rings to maximize efficiency and a smooth airflow.

Easy access - There is access to the fan via the lid which means easier provision for servicing.

Ease of installation – All models are designed for direct connection to standard ductwork with 50 mm long rectangular spigots for ease of connection.

Motor protection – All SSSDR units have integral thermal overload protection which prevents the motor from overheating.

Ease of wiring – The motors are pre-wired to a factory fitted IP55 Isolator.

Tested to the very latest standards – SSSDR & SSBR units are tested to ISO 5801:1997 (airside performance) and to BS 848 Pt 2:1985 (sound performance) at Elta Fans own test facility, meaning accurate, up to date information on performance and noise data that can be relied upon.

Quality assurance – All units are designed and manufactured with procedures as defined in BS EN ISO 9001: 2000.

Warranty – Each SSSDR & SSBR has a 12 month warranty.

Full accessory range - SSSDR accessories include speed controllers. SSBR accessories include inverters.

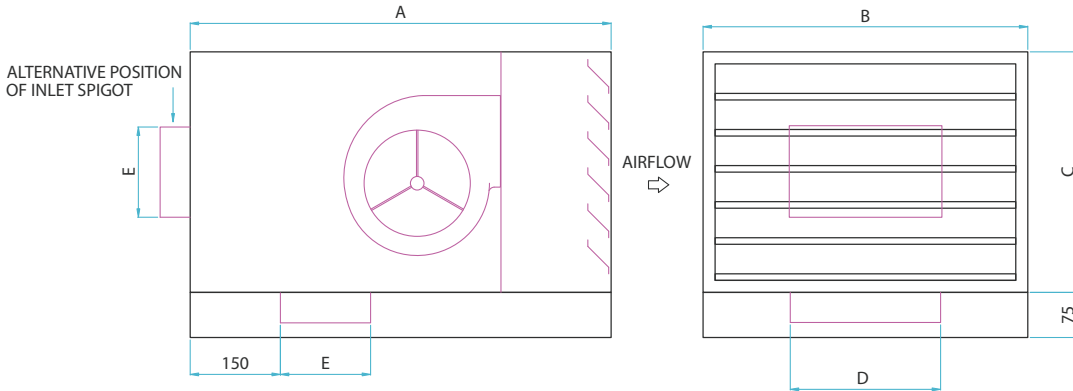
Typical Applications

Industrial buildings, banks, hospitals, offices, hotels and shopping malls.

ROOF MOUNTED

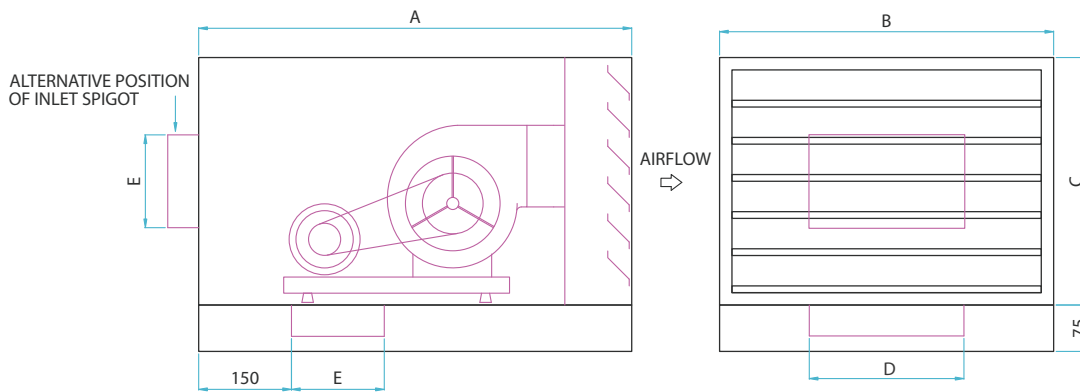
Singleflow SSDR & SSBR

Dimensional Data



Product Code	A	B	C	D	E	Weight kg
SSDR 1/L*	500	340	275	175	100	11
SSDR 2/L*	700	500	350	225	150	17
SSDR 3/L*	700	540	400	250	150	24
SSDR 4/L*	800	650	450	350	200	31
SSDR 5/L*	950	650	550	400	325	37
SSDR 6/L*	1050	750	550	450	350	39
SSDR 7/L*	1150	800	650	650	400	57

* Suffix 'L' applicable to acoustically lined units



Product Code	A	B	C	D	E	Weight kg
SSBR 1/L*	1100	600	500	400	400	60
SSBR 2/L*	1300	800	600	600	500	77
SSBR 3/L*	1600	950	700	650	600	114
SSBR 4/L*	1600	1100	800	800	700	146

Alternative inlet spigot on request

ROOF MOUNTED

Accessories



Singleflow SSDR & SSBR

Performance & Electrical Data



Direct Drive SINGLE Phase - 220V-240V / 50Hz

Product Code	Speed r/min	Airflow m ³ /s @ Static Pressure Pa.												Motor Electrical Data			Speed Control		Sound Level dBA @ 3m	Breakout dBA @ 3m
		0	25	50	75	100	150	200	250	300	350	400	FLC Amps	SC Amps	Input kW	Electron-ic	Trans-former	SSDR/SSDR/L		
SSDR1/L	2250	0.056	0.053	0.050	0.047	0.043	0.036	0.028	0.019				0.37	1.41	0.085	EL31	TC12	32/31	27/26	
SSDR2/L	1330	0.179	0.158	0.133	0.107	0.070							0.43	1.38	0.098	EL31	TC12	38/37	31/30	
SSDR3/L	1220	0.280	0.257	0.232	0.209	0.184	0.133	0.082	0.028				1.20	4.80	0.250	EL31	TC12	45/43	36/34	
SSDR4/L	1415	0.465	0.436	0.404	0.372	0.340	0.272	0.190	0.104	0.030			2.70	9.60	0.500	EL61	TC14	50/48	44/42	
SSDR5/L	1250	0.800	0.778	0.760	0.734	0.716	0.660	0.604	0.534	0.430	0.279	0.100	4.40	12.60	0.960	EL61	TC18	50/48	43/41	
SSDR6/L	1310	0.960	0.945	0.915	0.898	0.875	0.825	0.770	0.682	0.565	0.302	0.150	5.20	18.90	1.100	EL61	TC18	54/52	46/44	
SSDR7/L	820	1.410	1.370	1.320	1.280	1.220	1.100	0.965	0.785	0.430	0.150		7.00	20.70	1.400	EL101	TC110	55/53	47/45	

• For information on silencers and an explanation of the data, see p107 * Suffix 'L' applicable to acoustically lined units

Silencer Data

Product Code	Silencer Attenuation & Pressure Drop Data					
	600L		900L		1200L	
	600L	900L	1250L	600L	900L	1250L
SSDR1/L	-7	-9	-11	10	11	12
SSDR2/L	-7	-9	-11	18	20	22
SSDR3/L	-6	-8	-9	26	28	30
SSDR4/L	-6	-8	-10	12	13	14
SSDR5/L	-7	-9	-12	21	23	25
SSDR6/L	-7	-9	-11	20	22	24
SSDR7/L	-8	-11	-14	16	17	18

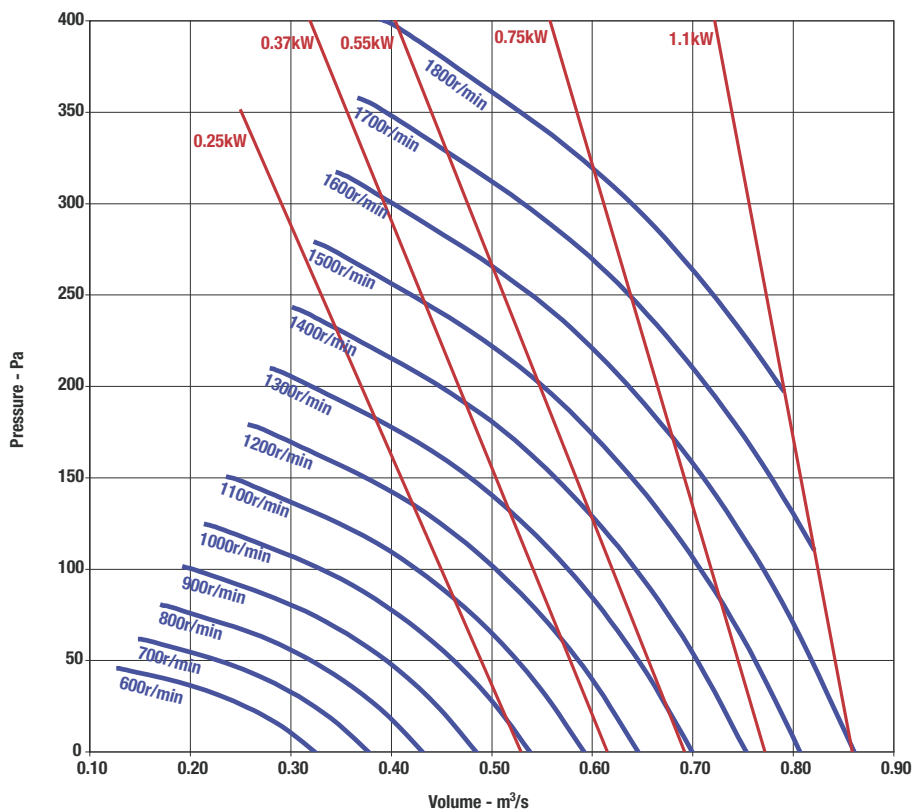
Sound levels are average spherical free field values at 50% peak pressure for comparative purposes only. For silencer selection refer to Elta Fans.

SSBR1 SSBR1/L

Speed r/min	dBA @3m
600	42
700	45
800	48
900	51
1000	53
1100	55
1200	57
1300	59
1400	60
1500	62
1600	63
1700	65
1800	66

Sound levels are average spherical free field values at 50% peak pressure for comparative purposes only.

For all belt drive electrical data please refer to p119. For explanation of belt drive selection see p110.



ROOF MOUNTED

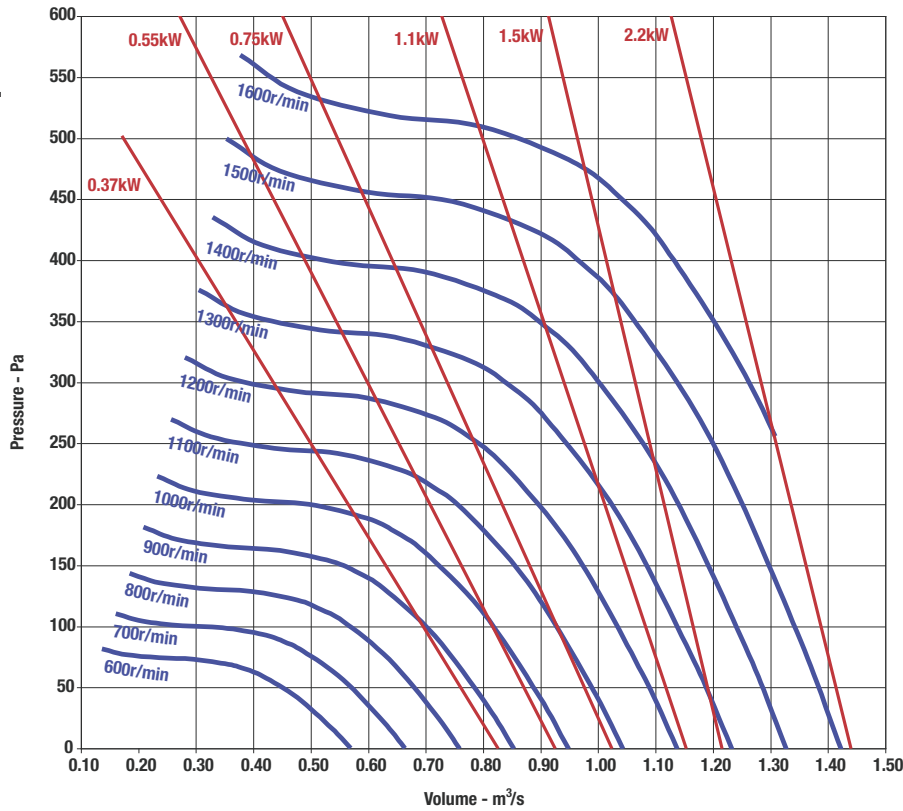
Singleflow SSDR & SSBR

Performance & Electrical Data



For all belt drive electrical data please refer to p119. For explanation of belt drive selection see p110.

SSBR2 SSBR2/L

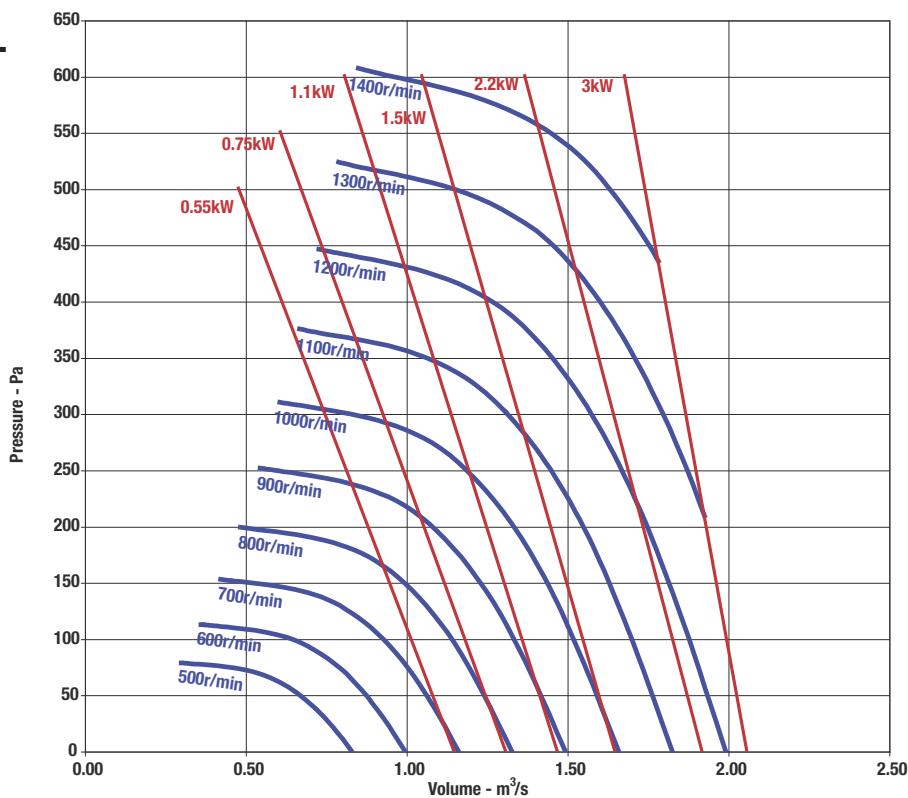


Speed r/min	dBA @3m
600	44
700	47
800	50
900	53
1000	55
1100	57
1200	59
1300	61
1400	63
1500	64
1600	65

Sound levels are average spherical free field values at 50% peak pressure for comparative purposes only.

For all belt drive electrical data please refer to p119. For explanation of belt drive selection see p110.

SSBR3 SSBR3/L



Speed r/min	dBA @3m
500	45
600	49
700	52
800	55
900	58
1000	60
1100	62
1200	64
1300	66
1400	67

Sound levels are average spherical free field values at 50% peak pressure for comparative purposes only.

ROOF MOUNTED

Singleflow SSDR & SSBR

Performance & Electrical Data

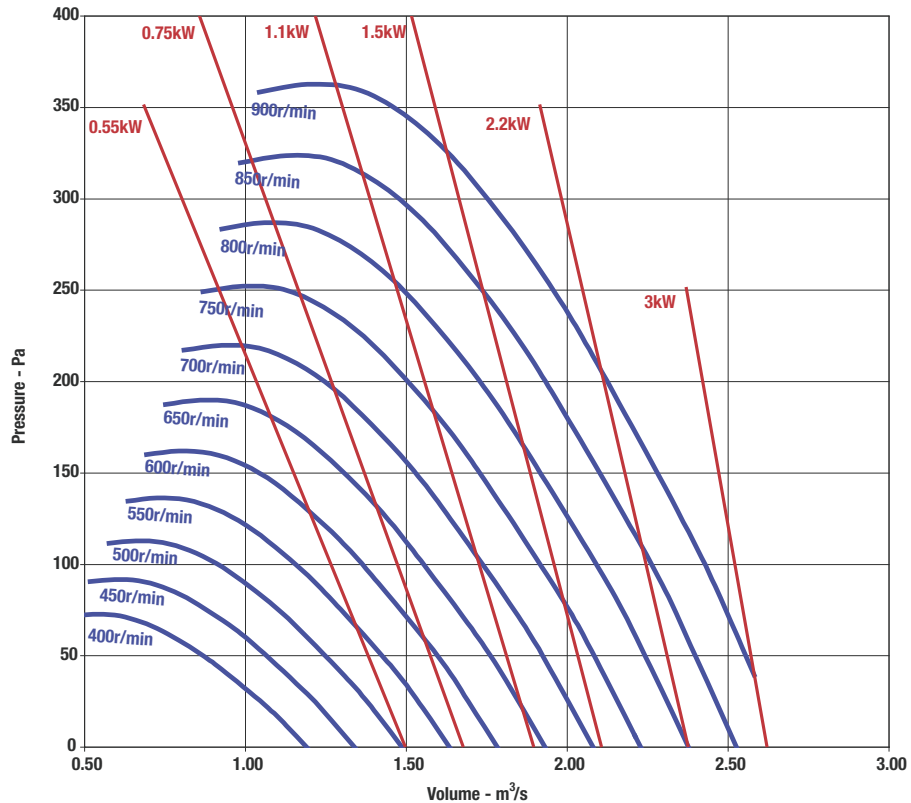


For all belt drive electrical data please refer to p119. For explanation of belt drive selection see p110.

SSBD4 SSBD4/L

Speed r/min	dBA @3m
400	43
450	46
500	48
550	50
600	52
650	54
700	55
750	57
800	58
850	60
900	61

Sound levels are average spherical free field values at 50% peak pressure for comparative purposes only.

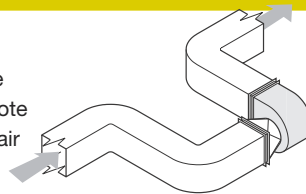


ROOF MOUNTED

Air Entry

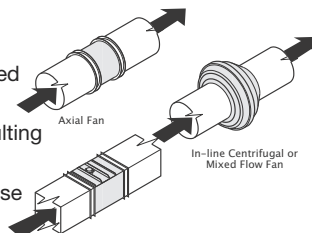
DO NOT!

An abrupt entry will generate turbulence at the impeller. Note blade tips will be starved of air which reduces pressure development capability, induces stall and increase the noise level generated by the fan.



DO!

By fitting a correctly designed inlet cone the air flow to the impeller will be uniform resulting in the performance being optimised and minimum noise level generated.



Twinflow STDR & STBR

Features & Benefits



The Twinflow STDR and STBR is a range of direct and belt driven centrifugal fans for external roof mounting, manufactured in aluminium alloy with a mill finish and a louvred air discharge. Ideal for external mounting on roof tops where ceiling voids and roof spaces are inadequate or the unit is too large to fit internally, they are available with or without acoustic lining dependant on whether lower breakout noise levels are required.

- STDR & STBR air volume flow rates of 1.4 m³/s and 7.3 m³/s respectively.
- STDR & STBR static pressures of between 400 Pa and 900 Pa respectively .
- STDR has 7 standard sizes.
- STBR has 6 standard sizes.
- Robust mill finish aluminium alloy casing.
- Supplied with or without acoustic lining.
- Double inlet, double width, forward curved centrifugal impeller.
- Single speed squirrel cage induction motor.
- Louvred air discharge guard.
- Pre-wired to IP55 isolator.
- Suitable for operating temperatures of up to 40°C (STDR) and 50°C (STBR).
- In built vibration isolation.
- Lower noise levels.

Features & Benefits

Material Strength – This robust and durable unit has a casing manufactured from mill finish aluminium alloy, with a louvred air discharge which provides protection against ingress from the elements and is self draining.

Functionality – Non return gravity shutters are fitted on the fan outlets which means preventing the recirculation of air between the fans and the backdraughts when the unit is not operating.

Detection – Each unit is fitted with airflow detection switches which are pre wired into the units terminal block for connection to a suitable control panel to allow auto changeover in the event of fan failure.

Reliability – Motors have sealed for life bearings.

Alternative – An alternative position of the intake spigot can be fitted on the end of the unit for when the ventilation riser is not directly over the unit, this allows the unit to be fixed adjacent to ducting.

Low noise - Twin fans have the option of being acoustically lined with Class O acoustic foam so that breakout noise levels are significantly lowered.

Low profile - Casings have a low profile design which allows ease of fitting in to roof spaces.

Design appeal – Anti-vibration mounts are fitted between the motor mounting arms and the fan casing which ensures smooth running.

Quality impellers – Either direct or belt driven double inlet, double width forward curved centrifugal impellers, housed in a purpose designed scroll with integral deep drawn inlet rings to maximize efficiency and a smooth airflow.

Easy access - There is access to the fan via screws on the lid which means provision for easier servicing.

Ease of installation – All models are designed for direct connection to standard ductwork with 50 mm long rectangular spigots for ease of connection.

Motor protection – All STDR units have integral thermal overload protection which prevents the motor from overheating.

Flexibility – STBR Belt driven options provide the flexibility to change duties via belt and pulley changes to match the system requirements, easily adjustable on site.

Ease of wiring – The motors are pre-wired to a factory fitted IP55 isolator.

Tested to the very latest standards – STDR & STBR units are tested to ISO 5801:1997 (airside performance) and to BS 848 Pt 2:1985 (sound performance) at Elta Fans own test facility, meaning accurate, up to date information on performance and noise data that can be relied upon.

Quality assurance – All units are designed and manufactured with procedures as defined in BS EN ISO 9001: 2000.

Warranty – Each STDR & STBR has a 12 month warranty.

Full accessory range - Auto changeover panels.

Typical Applications

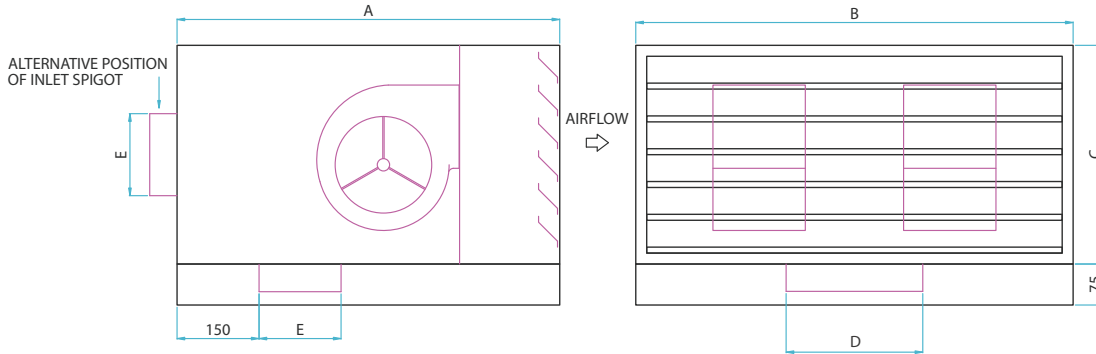
Industrial buildings, banks, hospitals, offices, hotels and shopping malls.

Twinflow STDR & STBR

Dimensional Data

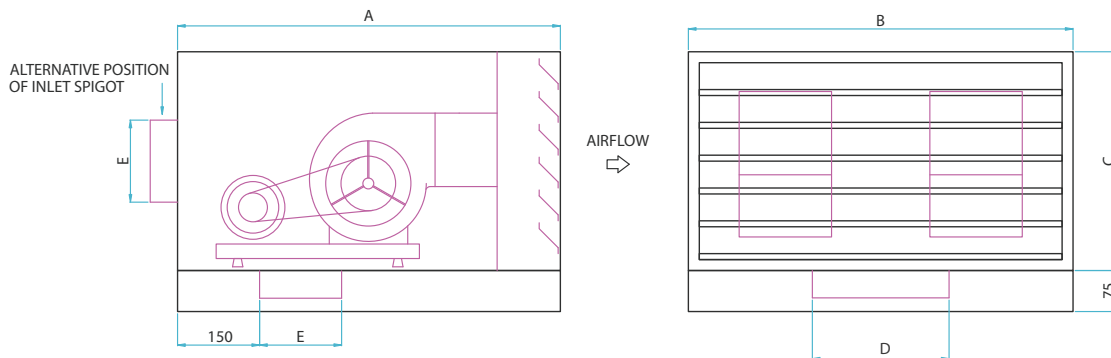


142



Product Code	A	B	C	D	E	F	Weight kg
STDR 1/L*	500	500	275	175	100	150	16
STDR 2/L*	700	740	350	225	150	150	27
STDR 3/L*	700	800	400	250	150	150	39
STDR 4/L*	800	950	450	350	200	150	53
STDR 5/L*	950	950	550	400	325	150	67
STDR 6/L*	1050	1050	550	450	350	150	78
STDR 7/L*	1150	1150	650	650	400	200	110

* Suffix 'L' applicable to acoustically lined units



Product Code	A	B	C	D	E	Weight kg
STBR 1/L*	1100	900	500	600	300	90
STBR 2/L*	1300	1100	600	800	350	115
STBR 3/L*	1600	1200	700	850	450	170
STBR 4/L*	1600	1550	800	1100	500	220
STBR 5/L*	2000	2000	1050	1500	700	340
STBR 6/L*	2000	2300	1100	1800	800	390

Alternative inlet spigot on request

ROOF MOUNTED

Accessories



p177

Twinflow STDR & STBR

Performance & Electrical Data



Direct Drive SINGLE Phase - 220V-240V / 50Hz

Product Code	Speed r/min	Airflow m ³ /s @ Static Pressure Pa.										Motor Electrical Data			Sound Level dBA @ 3m	Breakout dBA @ 3m	
		0	25	50	75	100	150	200	250	300	350	400	FLC Amps	SC Amps	Input kW	STDR/STDR/L	STDR/STDR/L
STDR1/L	2250	0.056	0.053	0.050	0.047	0.043	0.036	0.028	0.019				0.37	1.41	0.085	29/28	27/26
STDR2/L	1330	0.179	0.158	0.133	0.107	0.070							0.43	1.38	0.098	36/35	32/31
STDR3/L	1220	0.280	0.257	0.232	0.209	0.184	0.133	0.082	0.028				1.20	4.80	0.250	45/44	38/36
STDR4/L	1415	0.465	0.436	0.404	0.372	0.340	0.272	0.190	0.104	0.030			2.70	9.60	0.500	49/47	46/44
STDR5/L	1250	0.800	0.778	0.760	0.734	0.716	0.660	0.604	0.534	0.430	0.279	0.100	4.40	12.60	0.960	50/48	46/42
STDR6/L	1310	0.960	0.945	0.915	0.898	0.875	0.825	0.770	0.682	0.565	0.302	0.150	5.20	18.90	1.100	54/52	48/46
STDR7/L	820	1.410	1.370	1.320	1.280	1.220	1.100	0.965	0.785	0.430	0.150		7.00	20.70	1.400	52/50	45/44

• For information on silencers and an explanation of the data, see p107

* Suffix 'L' applicable to acoustically lined units.

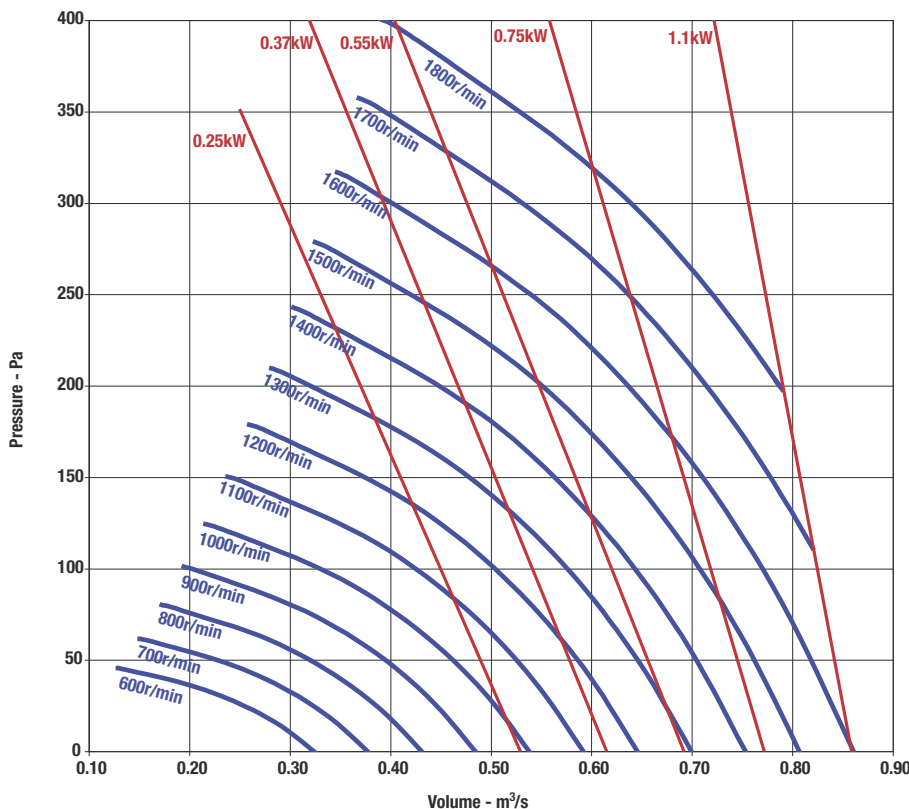
Silencer Data

Product Code	Silencer Attenuation & Pressure Drop Data					
	600L		900L		1200L	
	600L	900L	1250L	600L	900L	1250L
STDR1/L	-6	-9	-11	10	11	12
STDR2/L	-6	-9	-10	18	20	22
STDR3/L	-6	-9	-10	26	28	30
STDR4/L	-5	-6	-8	12	13	14
STDR5/L	-7	-9	-11	21	23	25
STDR6/L	-7	-9	-11	20	22	24
STDR7/L	-8	-10	-13	16	17	18

Sound levels are average spherical free field values at 50% peak pressure for comparative purposes only.

For silencer selection refer to Elta Fans.

For all belt drive electrical data please refer to p119. For explanation of belt drive selection see p110.



STBR1 STBR1/L

Speed r/min	dBA @3m
600	42
700	45
800	48
900	51
1000	53
1100	55
1200	57
1300	59
1400	60
1500	62
1600	63
1700	65
1800	66

Sound levels are average spherical free field values at 50% peak pressure for comparative purposes only.

ROOF MOUNTED

Twinflow STDR & STBR

Performance & Electrical Data

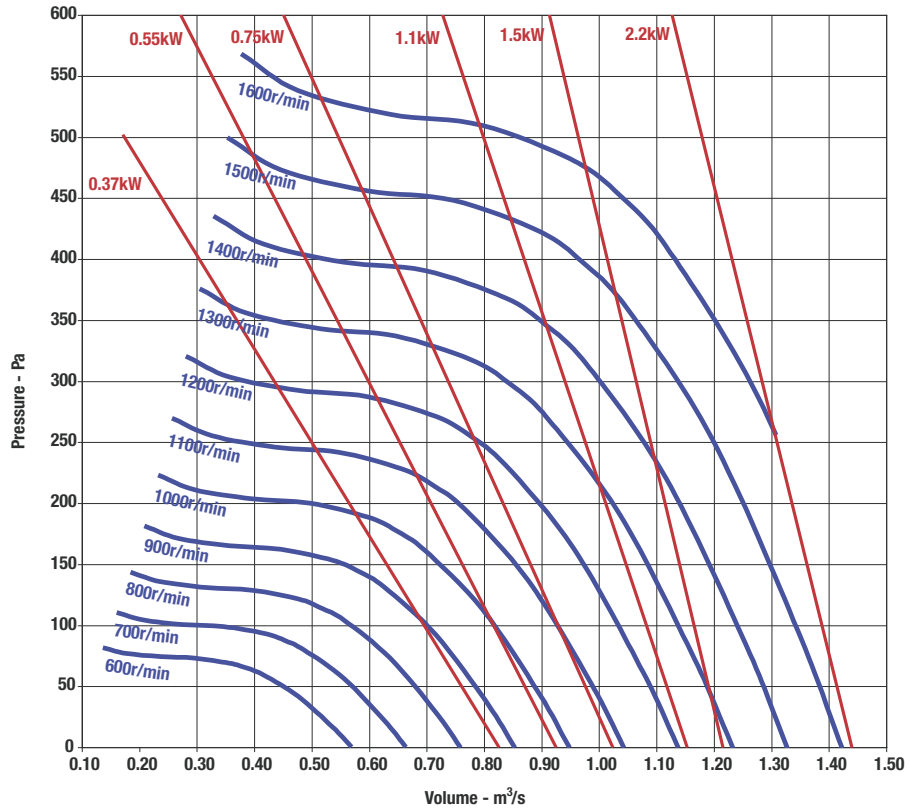


For all belt drive electrical data please refer to p119. For explanation of belt drive selection see p110.

STBR2 STBR2/L

Speed r/min	dBA @3m
600	44
700	47
800	50
900	53
1000	55
1100	57
1200	59
1300	61
1400	63
1500	64
1600	65

Sound levels are average spherical free field values at 50% peak pressure for comparative purposes only.



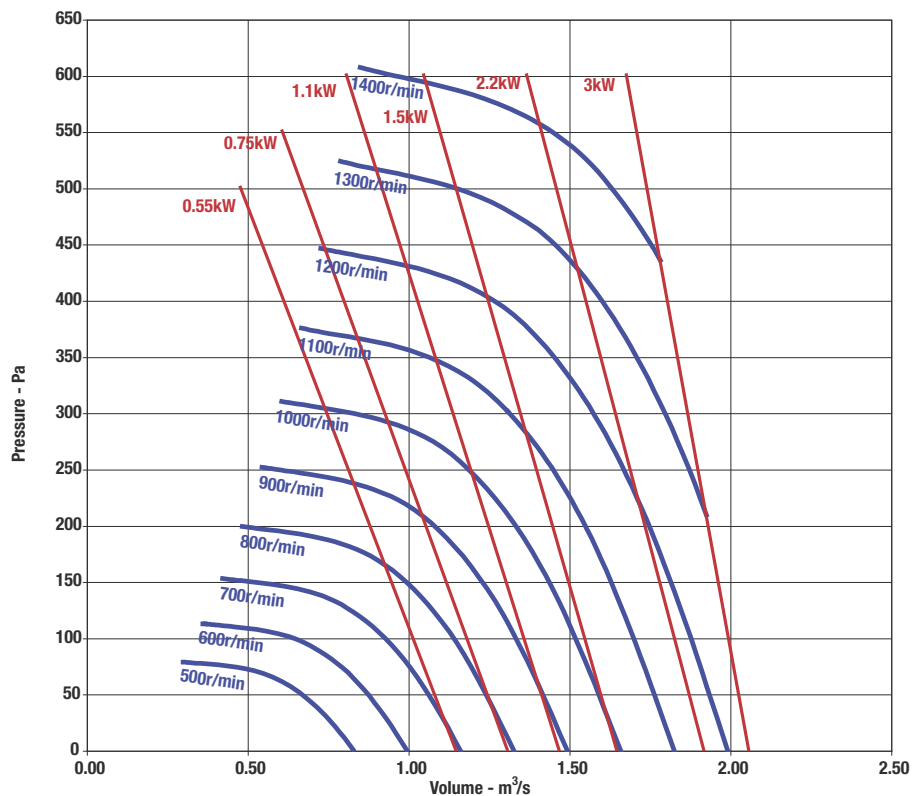
For all belt drive electrical data please refer to p119. For explanation of belt drive selection see p110.

STBR3 STBR3/L

ROOF MOUNTED

Speed r/min	dBA @3m
500	45
600	49
700	52
800	55
900	58
1000	60
1100	62
1200	64
1300	66
1400	67

Sound levels are average spherical free field values at 50% peak pressure for comparative purposes only.

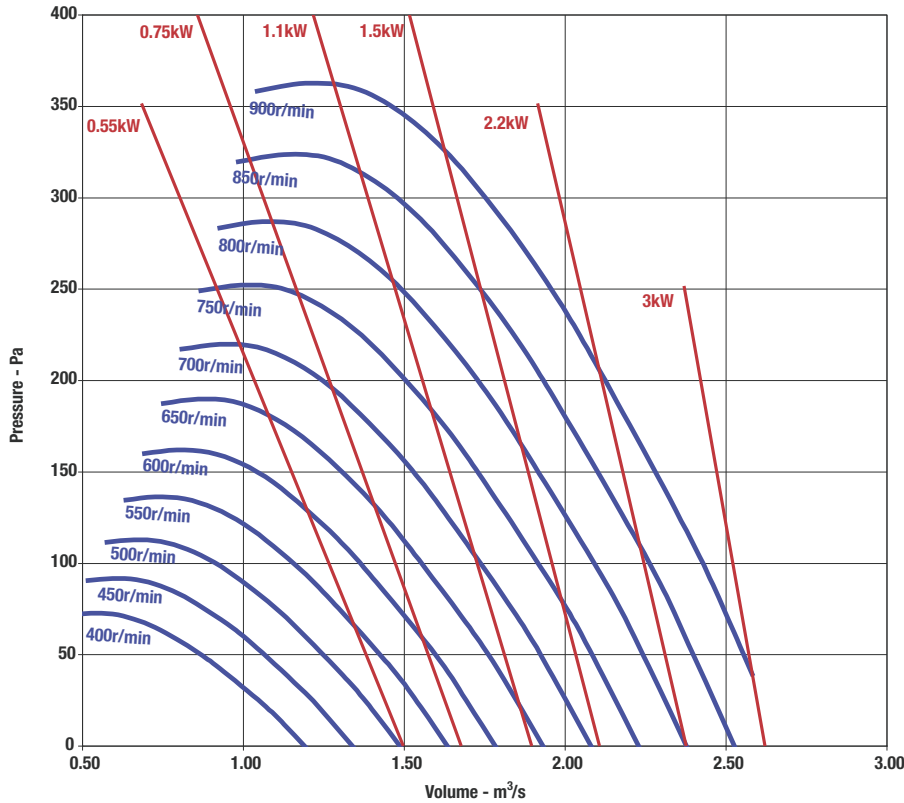


Twinflow STDR & STBR

Performance & Electrical Data



For all belt drive electrical data please refer to p119. For explanation of belt drive selection see p110.

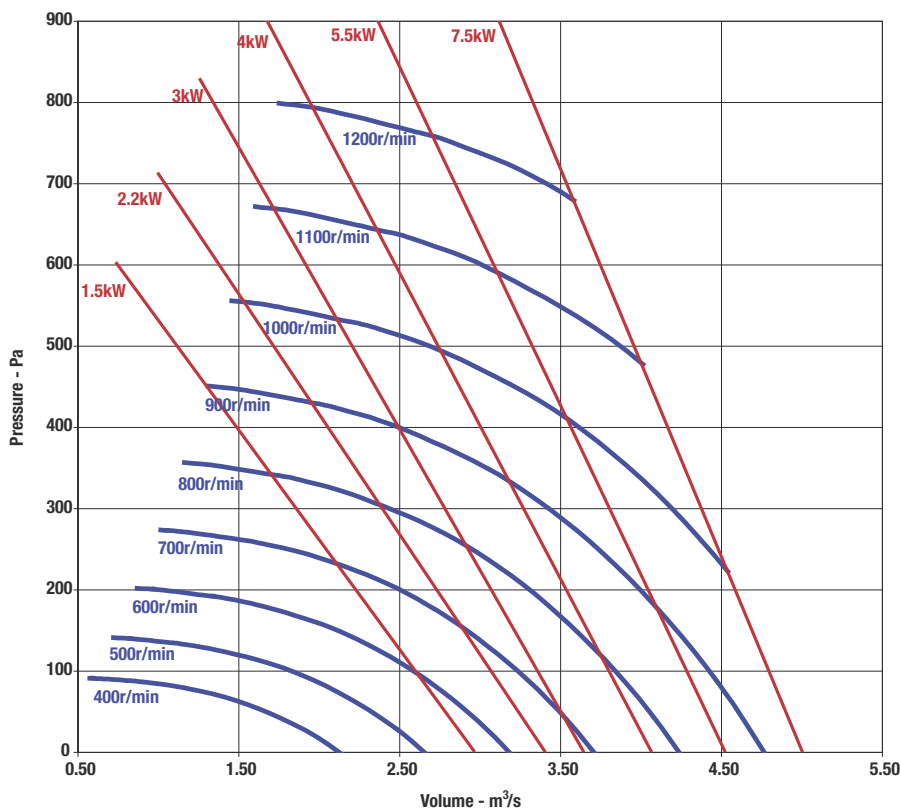


STBR4 STBR4/L

Speed r/min	dBA @3m
400	43
450	46
500	48
550	50
600	52
650	54
700	55
750	57
800	58
850	60
900	61

Sound levels are average spherical free field values at 50% peak pressure for comparative purposes only.

For all belt drive electrical data please refer to p119. For explanation of belt drive selection see p110.



STBR5 STBR5/L

Speed r/min	dBA @3m
400	43
500	49
600	53
700	57
800	60
900	63
1000	65
1100	68
1200	70

Sound levels are average spherical free field values at 50% peak pressure for comparative purposes only.

ROOF MOUNTED

Twinflow STDR & STBR

Performance & Electrical Data

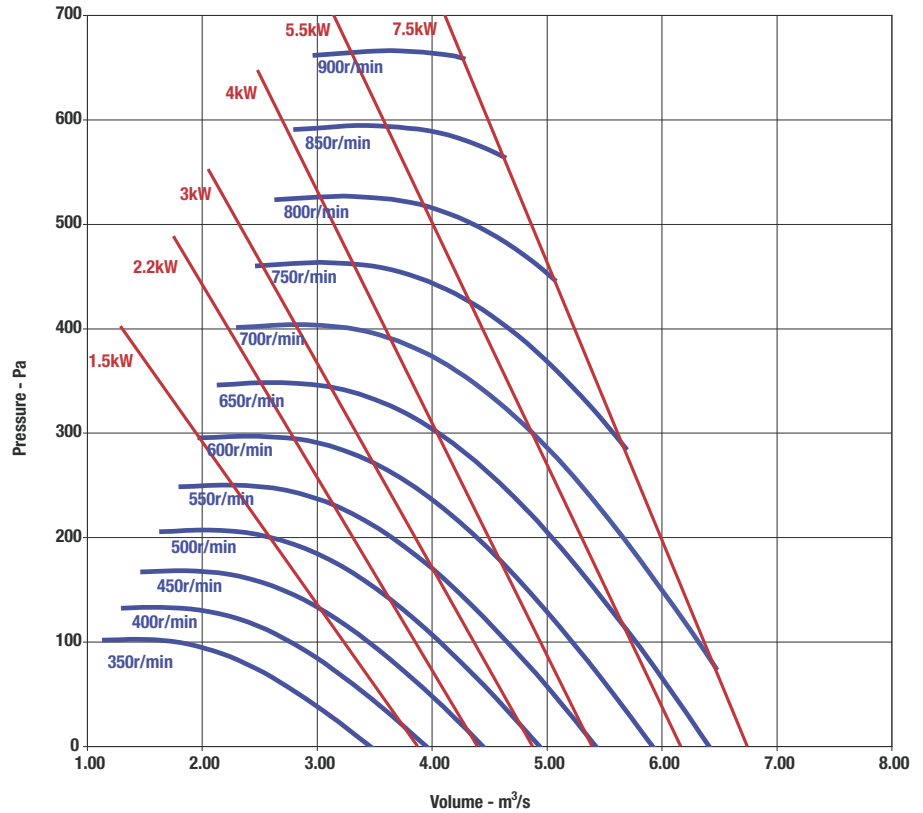


For all belt drive electrical data please refer to p119. For explanation of belt drive selection see p110.

STBR6 STBR6/L

Speed r/min	dBA @3m
350	45
400	48
450	51
500	54
550	56
600	58
650	60
700	62
750	64
800	65
850	67
900	68

Sound levels are average spherical free field values at 50% peak pressure for comparative purposes only.



ROOF MOUNTED

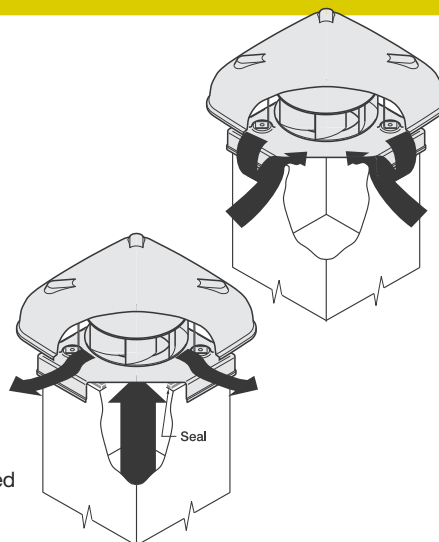
Roof ventilator short-circuiting of air

DO NOT!

If the unit does not have an airtight seal between the base and the upstand, short-circuiting of outside air can occur thereby reducing the amount exhausted from the building.

DO!

An airtight seal between the upstand and the fan base prevents short-circuiting of outside air ensuring the fan is exhausting from the designated space.



Heritage SGE

Features & Benefits



The Heritage SGE range of vertical discharge centrifugal roof extract units has been developed to simplify cleaning and general maintenance and to assist in the collection of grease in applications such as fast food restaurants, commercial kitchens and process work where exhaust air is grease laden.

- 4 standard sizes from 400mm to 560 mm.
- Air Volume flow rates of up to 3.21m³/sec.
- Static Pressures of up to 800Pa.
- Horizontal mounting.
- Speed controllable.
- Motors are squirrel cage induction type.
- Suitable for operating temperatures of up to 50°C.
- Motors are protected to IP55 with Class F insulation to EN 60034-5.
- Galvanised mild steel with a powder coat finish.

Features & Benefits

Effective design - The housing incorporates a grease / water separator which allows excess rainwater to be plumbed away from the unit, while retaining the grease in a collector for later removal and environmental disposal.

Easy access - For maintenance access the unit is fitted with quick release toggle clamps which, when released, allows the unit to hinge open without the need to completely remove the cowl, and access is easily gained for cleaning.

Easy maintenance - The wind band can be easily removed by unlatching toggle clamps, allowing easy access to the impeller. Tilting the fan base assembly backwards provides ready access for cleaning the base.

Reliability – Motors have sealed for life bearings.

Mounting arrangement – The unit should always be mounted on a horizontal plane.

Accessories – Inverters

Tested to the very latest standards – SGE units are tested to ISO 5801:1997 (airside performance) and to BS 848 Pt 2:1985 (sound performance) meaning accurate, up to date information on performance and noise data that can be relied upon.

Quality assurance – All units are designed and manufactured with procedures as defined in BS EN ISO 9001: 2000.

Warranty – Each SGE has a one year warranty.

Typical Applications

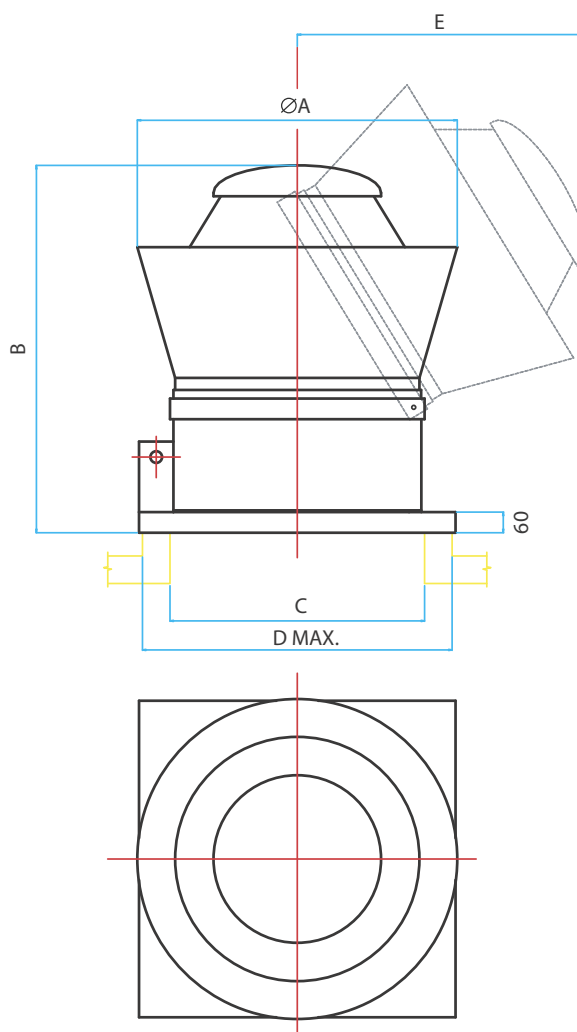
Commercial kitchen and catering establishments, service stations, fast food restaurants and installations where grease laden air is being extracted.

Heritage SGE

Dimensional Data



148



Product Code	A	B	C	D	E	Weight kg
SGE400/4-3	667	870	540	620	820	88
SGE450/4-3	930	995	740	900	980	128
SGE500/4-3	930	995	740	900	980	153
SGE560/4-3	930	995	740	900	980	178

ROOF MOUNTED

Accessories



Heritage SGE

Performance & Electrical Data



THREE Phase - 380V-415V / 50Hz

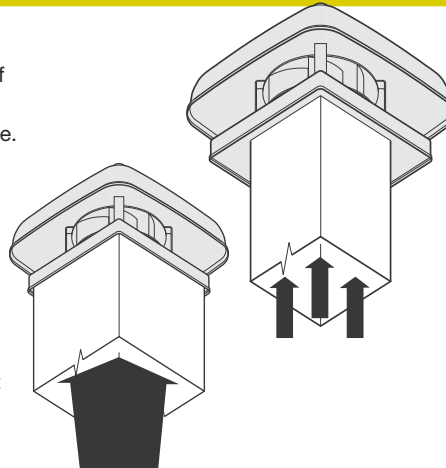
Product Code	Speed r/min	Airflow m ³ /s @ Static Pressure Pa.														Motor Electrical Data			Sound Level dBA @ 3m
		0	50	100	150	200	250	300	350	400	450	500	600	700	800	FLC Amps	SC Amps	Output kW	
SGE400/4-3	1440	1.12	1.09	1.05	1.01	0.95	0.88	0.79	0.67	0.49						1.50	9.0	0.55	54
SGE450/4-3	1440	1.58	1.54	1.48	1.43	1.37	1.30	1.23	1.15	1.05	0.94	0.79				2.10	12.6	0.75	56
SGE500/4-3	1440	2.22	2.14	2.07	2.00	1.92	1.85	1.77	1.69	1.61	1.52	1.41	1.11			3.40	20.4	1.50	60
SGE560/4-3	1440	3.21	3.13	3.06	2.98	2.90	2.82	2.74	2.65	2.55	2.45	2.35	2.11	1.82	1.41	7.10	42.6	3.00	65

Sound levels are average spherical free field values at 50% peak pressure for comparative purposes only.

Mounting of roof units to ductwork

DO NOT!

Don't connect to the 'eye' of the base as this increases pressure losses on the intake.



DO!

Size inlet duct to fit roof unit overflashing.

ROOF MOUNTED

Heritage SCH

Features & Benefits



150

The SCH range is a range of vertical discharge centrifugal fans designed for use in commercial kitchen exhaust systems and other applications requiring the combination of speed controllable motors with an all metal construction.

- Air volume flow rates of up to 1.76 m³/sec.
- Static pressures of up to 500 Pa.
- Motors external rotor.
- Motors IP44 protection and Class B insulation.
- Suitable for operating temperatures up to 50° C.
- Cowls are of galvanised steel construction.
- Backward-curved centrifugal impellers.
- Motor and impeller balanced to quality class G6.3.
- Can be mounted at angles of up to 30°.

Features & Benefits

Material strength – The all metal cowls have a robust, long lasting construction, manufactured from galvanised steel.

Impeller design – Aerodynamically designed backward curved centrifugal impellers in either steel or aluminium dependant upon impeller selection.

Reliability – Motors have sealed for life bearings.

Performance – All SCH axial fans are powered by an external rotor motor.

Easy cleaning - The wind band is held in place with toggle clamps to permit easy access for cleaning and maintenance.

Mounting - Can be mounted at angles up to 30° which means the fans can be fitted directly to pitched roofs.

Accessories – Speed controllers.

Tested to the very latest standards – SCH units are tested to ISO 5801:1997 (airside performance) and to BS 848 Pt 2:1985 (sound performance) meaning accurate, up to date information on performance and noise data that can be relied upon.

Warranty – Each SCH has a one year warranty.

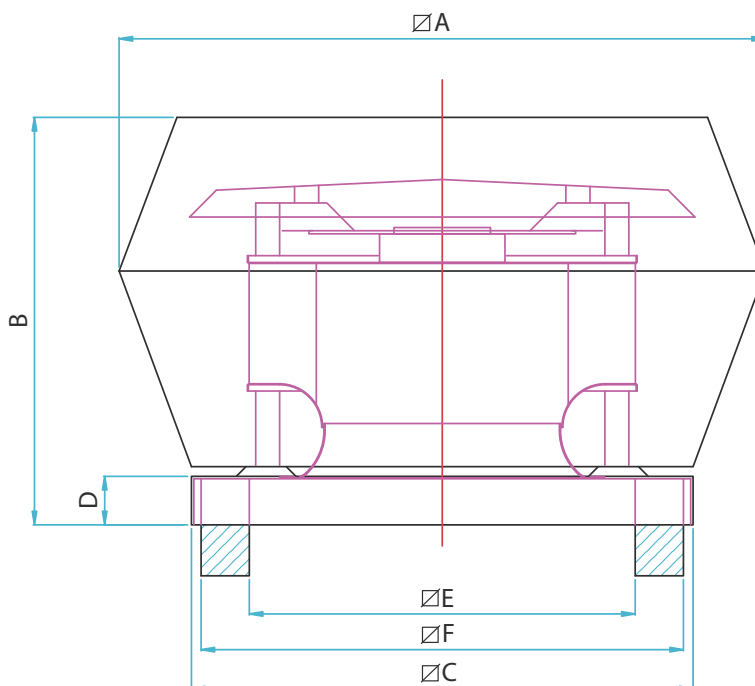
Quality assurance – All units are designed and manufactured with procedures as defined in BS EN ISO 9001: 2000.

Typical Applications

Industrial, commercial kitchens and catering, hospitals, bakeries, forges and foundries.

Heritage SCH

Dimensions



Product Code	A	B	C	D	E	F	Weight kg
SCH315	520	310	430	50	310	410	16
SCH350	670	420	520	50	400	500	26
SCH400	670	420	520	50	400	500	26
SCH450	900	540	740	60	620	720	49
SCH500	900	540	740	60	620	720	51/57†
SCH560	900	540	740	60	620	720	56/65†
SCH630	1160	670	830	60	710	810	78/97†

† The higher weight shown applies to the /4-2 & /4-3 versions.

ROOF MOUNTED

Accessories



Heritage SCH

Performance & Electrical Data



152

SINGLE Phase - 220V-240V / 50Hz

Product Code	Speed r/min	Airflow m ³ /s @ Static Pressure Pa.									Motor Electrical Data			Speed Control		Sound Level dBA @ 3m
		0	50	100	150	200	250	300	400	500	FLC Amps	SC Amps	Output kW	Electr- onic	Trans- former	
SCH315/6-2	900	0.26	0.21								0.54	3.2	0.07	EL31TK	TC12	41
SCH315/4-2	1380	0.34	0.32	0.30	0.26	0.20					0.66	4.0	0.15	EL31TK	TC12	47
SCH350/6-2	900	0.52	0.46	0.37	0.22						0.32	1.9	0.07	EL31TK	TC12	42
SCH350/4-2	1380	0.70	0.66	0.62	0.57	0.52	0.47	0.40			1.25	7.5	0.28	EL31TK	TC12	51
SCH400/6-2	900	0.63	0.57	0.49	0.38						0.88	5.3	0.20	EL31TK	TC12	44
SCH400/4-2	1380	1.00	0.93	0.86	0.80	0.73	0.66	0.60	0.45		2.00	12.0	0.42	EL31TK	TC14	54
SCH450/6-2	900	0.98	0.89	0.81	0.71	0.59					2.00	12.0	0.43	EL31TK	TC14	46
SCH450/4-2	1380	1.35	1.31	1.27	1.23	1.19	1.14	1.08	0.92	0.66	3.50	21.0	0.76	EL61TK	TC18	56
SCH500/6-2	900	1.30	1.21	1.11	1.01	0.90	0.68				2.50	15.0	0.53	EL31TK	TC14	49
SCH560/6-2	900	1.76	1.65	1.54	1.42	1.29	1.15	0.97			4.10	24.6	0.84	EL61TK	TC18	53

Sound levels are average spherical free field values at 50% peak pressure for comparative purposes only.

THREE Phase - 380V-415V / 50Hz

Product Code	Speed r/min	Airflow m ³ /s @ Static Pressure Pa.													Motor Electrical Data			Speed Control	Sound Level dBA @ 3m
		0	50	100	150	200	250	300	400	500	600	700	800	1000	FLC Amps	SC Amps	Output kW	Trans- former	
SCH315/6-3	900	0.26	0.21												0.15	0.9	0.09	TC33	41
SCH315/4-3	1380	0.34	0.32	0.30	0.26	0.20									0.37	2.2	0.18	TC33	47
SCH350/6-3	900	0.52	0.46	0.37	0.22										0.22	1.3	0.13	TC33	42
SCH350/4-3	1380	0.70	0.66	0.62	0.57	0.52	0.47	0.40							0.51	3.1	0.19	TC33	51
SCH400/6-3	900	0.63	0.57	0.49	0.38										0.73	4.4	0.23	TC33	44
SCH400/4-3	1380	1.00	0.93	0.86	0.80	0.73	0.66	0.60	0.45						1.40	8.4	0.45	TC33	54
SCH450/6-3	900	0.98	0.89	0.81	0.71	0.59									0.90	5.4	0.44	TC33	46
SCH450/4-3	1380	1.35	1.31	1.27	1.23	1.19	1.14	1.08	0.92	0.66					1.47	8.8	0.77	TC33	56
SCH500/6-3	900	1.30	1.21	1.11	1.01	0.90	0.68								1.20	7.2	0.65	TC33	49
SCH500/4-3	1380	1.87	1.83	1.78	1.73	1.68	1.63	1.58	1.45	1.29	1.02				2.60	15.6	1.30	TC35	60
SCH560/6-3	900	1.76	1.65	1.54	1.42	1.29	1.15	0.97							1.45	8.7	0.69	TC33	53
SCH560/4-3	1380	2.66	2.58	2.50	2.41	2.33	2.24	2.15	1.95	1.73	1.48	1.18			4.10	24.6	2.16	TC35	65
SCH630/6-3	900	2.60	2.46	2.36	2.27	2.17	2.06	1.92	1.30						2.20	13.2	1.10	TC35	57
SCH630/4-3	1380	3.99	3.91	3.84	3.77	3.70	3.63	3.57	3.43	3.29	3.15	2.99	2.81	2.25	7.35	44.1	4.30	TC310	70

Sound levels are average spherical free field values at 50% peak pressure for comparative purposes only.

ROOF MOUNTED

Heritage SCHAT

Features & Benefits



The Heritage SCHAT is a range of roof mounted centrifugal fans which is designed to handle clean, grease laden or contaminated air, whilst providing easy access for cleaning.

- Air volume flow rates of up to 4.57 m³/sec.
- Static pressures of up to 1000 Pa.
- Motors standard squirrel cage induction, mounted out of the air stream.
- Motors IP54 protection and Class F insulation.
- Suitable for operating temperatures up to 50° C.
- Cowls are of galvanised steel construction.
- Backward curved centrifugal impellers.
- Motor and impeller balanced to quality class G6.3.
- Can be mounted at angles of up to 15°.

Features & Benefits

Material strength – The all metal cowls have a robust, long lasting construction, manufactured from galvanised steel and powder coated after forming.

High temperature - With motors out of the air stream, the SCHAT is suitable for a wide range of applications from contaminated air to elevated temperatures.

Impeller design – Aerodynamically designed backward curved centrifugal impellers in either sheet steel or aluminium dependant upon impeller selection.

Reliability – Motors have sealed for life bearings.

Easy cleaning - The wind band is held in place with toggle clamps to permit easy access for cleaning and maintenance when the units are installed in atmospheres that are dirt laden.

Mounting - Can be mounted at angles of up to 15° which means the fans be fitted directly to pitched roofs.

Accessories – Inverters

Tested to the very latest standards – SCHAT units are tested to ISO 5801:1997 (airside performance) and to BS 848 Pt 2:1985 (sound performance) meaning accurate, up to date information on performance and noise data that can be relied upon.

Quality assurance – All units are designed and manufactured with procedures as defined in BS EN ISO 9001: 2000.

Warranty – Each SCHAT has a one year warranty.

Typical Applications

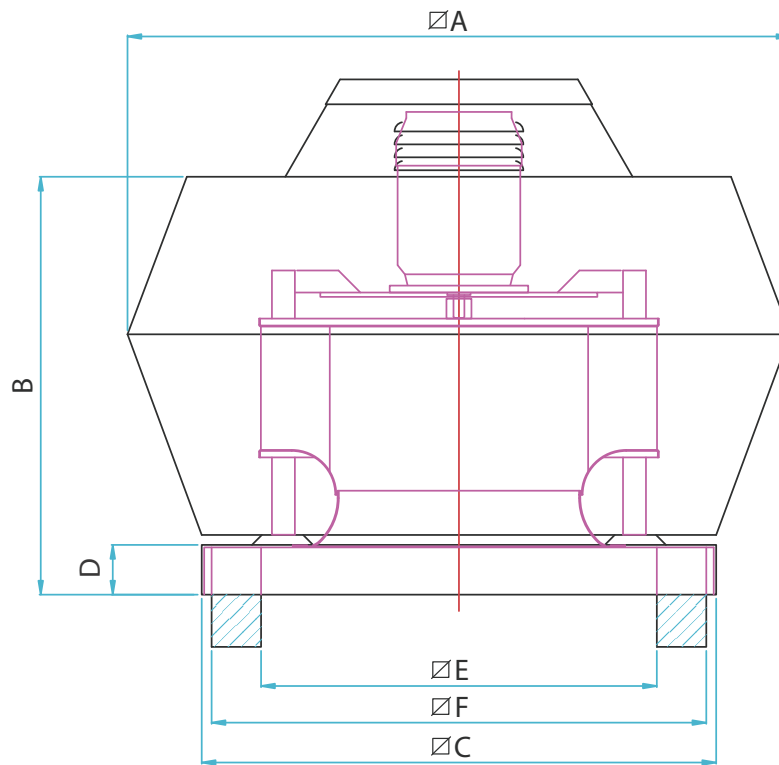
Industrial, commercial kitchens and catering, hospitals, bakeries, forges and foundries.

Heritage SHT

Dimensional Data



154



Product Code	A	B	C	D	E	F	Weight kg	
							4 Pole	6 Pole
SCHT315	520	310	430	50	310	410	16	
SCHT350	665	420	520	50	400	500	26	
SCHT400	665	420	520	50	400	500	26	
SCHT450	900	540	740	60	620	720	49	
SCHT500	900	540	740	60	620	720	57	51
SCHT560	900	540	740	60	620	720	65	56
SCHT630	1160	665	830	60	710	810	97	78

ROOF MOUNTED

Accessories



p177

Heritage SHT

Performance & Electrical Data



THREE Phase - 380V-415V / 50Hz

Product Code	Speed r/min	Airflow m ³ /s @ Static Pressure Pa.												Motor Electrical Data			Sound Level dBA @ 3m
		0	50	100	150	200	250	300	400	500	600	800	1000	FLC Amps	SC Amps	Output kW	
SCHT315/6-3	960	0.34	0.29	0.11										1.30	7.80	0.37	41
SCHT315/4-3	1440	0.53	0.50	0.45	0.41	0.35	0.28							1.20	7.20	0.37	47
SCHT350/6-3	960	0.53	0.43	0.31	0.18									1.30	7.80	0.37	42
SCHT350/4-3	1440	0.84	0.78	0.73	0.68	0.62	0.55	0.45						1.50	9.00	0.55	51
SCHT400/6-3	960	0.77	0.67	0.58	0.47									1.30	7.80	0.37	44
SCHT400/4-3	1440	1.12	1.08	1.03	0.97	0.91	0.84	0.76	0.52					1.50	9.00	0.55	54
SCHT450/6-3	960	1.05	0.98	0.90	0.78	0.63								1.30	7.80	0.37	46
SCHT450/4-3	1440	1.61	1.54	1.48	1.41	1.35	1.28	1.22	1.06	0.83				1.50	9.00	0.55	56
SCHT500/6-3	960	1.39	1.33	1.26	1.18	1.06	0.87							1.30	7.80	0.37	49
SCHT500/4-3	1440	2.24	2.18	2.11	2.04	1.97	1.89	1.81	1.63	1.42	1.14			2.90	17.4	1.10	60
SCHT560/6-3	960	2.14	2.04	1.92	1.79	1.65	1.49	1.29						1.80	10.8	0.55	53
SCHT560/4-3	1440	3.22	3.11	3.03	2.95	2.87	2.80	2.73	2.58	2.42	2.23	1.49		4.80	28.8	2.20	65
SCHT630/6-3	960	2.80	2.73	2.65	2.56	2.46	2.34	2.19	1.72					3.40	20.4	1.10	57
SCHT630/4-3	1440	4.57	4.48	4.39	4.29	4.20	4.10	4.00	3.80	3.58	3.36	2.83	2.07	8.03	48.2	4.00	70

Sound levels are average spherical free field values at 50% peak pressure for comparative purposes only.

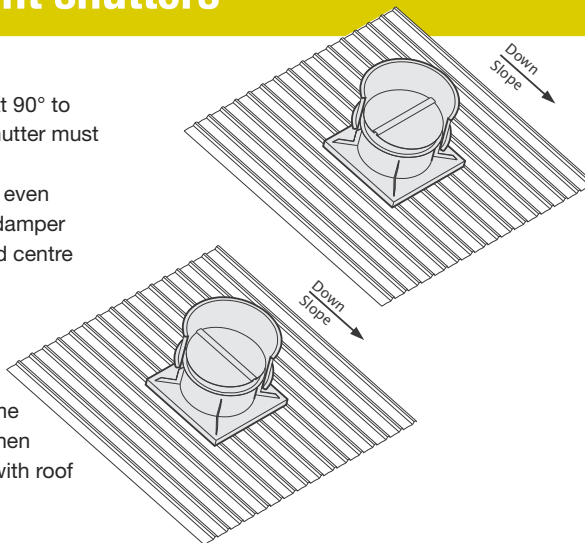
Backdraught shutters

DO NOT!

Don't have shutters at 90° to roof fall. The lower shutter must overcome a greater gravitational effect to even airflow. Also the top damper may go over top dead centre and not close.

DO!

Each leaf has the same gravitational effect when shutters are parallel with roof fall.



ROOF MOUNTED

Skyflow SSFV

Features & Benefits



156

The SSFV range is a range of vertical discharge axial flow roof extract units which are designed to discharge the air at higher velocities away from roof levels, balancing the need to satisfy architects modern day building needs against a vertical design. The Skyflow is UV stabilised for a durable, long lasting product, which delivers exceptional performance and noise characteristics.

- 8 standard sizes from 315mm to 710 mm.
- Air volume flow rates of up to 4.63 m³/sec.
- Static pressures of up to 200 Pa.
- UV stabilised GRP cowl finished in goose wing grey.
- Supplied fully assembled with axial flow fan as an option.
- Highly efficient, lightweight induction motors.
- Suitable for operating temperatures of 50° C with speed controllers and +70° C Fixed speed.
- Motors protected to IP55 with Class F insulation.
- Fully speed controllable.
- Thermal overload protection.
- Suitable for curb or purlin mounting.
- Impellers are highly efficient aerofoil bladed section, produced from GRP, retained in an aluminium hub and balanced to Grade G6.3.
- Extensive stock range available.
- Optional colours available.

Features & Benefits

Material Strength – A robust and durable unit with the top cowl and fan support housing in UV stabilised GRP to provide a longer life whilst the inlet guards are zinc plated and the fan plate and motor are powder coated epoxy paint finish.

Integral - Air operated shutters are fitted as standard which stops any discharged air (dirty air) from re-entering the building, as well as protection against the elements.

Time saving - Drop in silencers can be supplied which reduces installation time by fitting the silencers into the roof space rather than the ductwork – Less labour, less time and cost.

Mounting – SSFV units are designed to be suitable for either curb or purlin mounting and can be mounted on flat or inclined roofs with a maximum pitch angle of 15°.

Quality impellers – Adjustable pitch aerodynamic impellers are provided with blades made from high quality GRP and factory set at an angle to maximize performance.

Easier maintenance - Lightweight and easily accessible at roof level, this simplifies cleaning and maintenance.

Design appeal – Roof units are supplied as standard in goose wing grey, with the option of any other RAL colour to comply with the architects overall design, profile and colour scheme for a building.

Reliability – Motors have sealed for life bearings.

Cost effective – The backdraught shutters enable reductions in heat loss from the building when the SSFV is not operating.

Motor protection – All SSFV units have integral thermal overload protection which prevents the motor from overheating.

Ease of wiring – The electrical connection to the motor is made by an IP55 terminal box fitted to a 550mm flying lead from the units inlet side.

Tested to the very latest standards – SSFV units are tested to ISO 5801:1997 (airside performance) and to BS 848 Pt 2:1985 (sound performance) meaning accurate, up to date information on performance and noise data that can be relied upon.

Quality assurance – All units are designed and manufactured with procedures as defined in BS EN ISO 9001: 2000.

Warranty – Each SSFV Skyflow has a 12 month warranty.

Full accessory range - Purlin boxes, drop in silencers, speed controllers, inverters and soaker sheets.

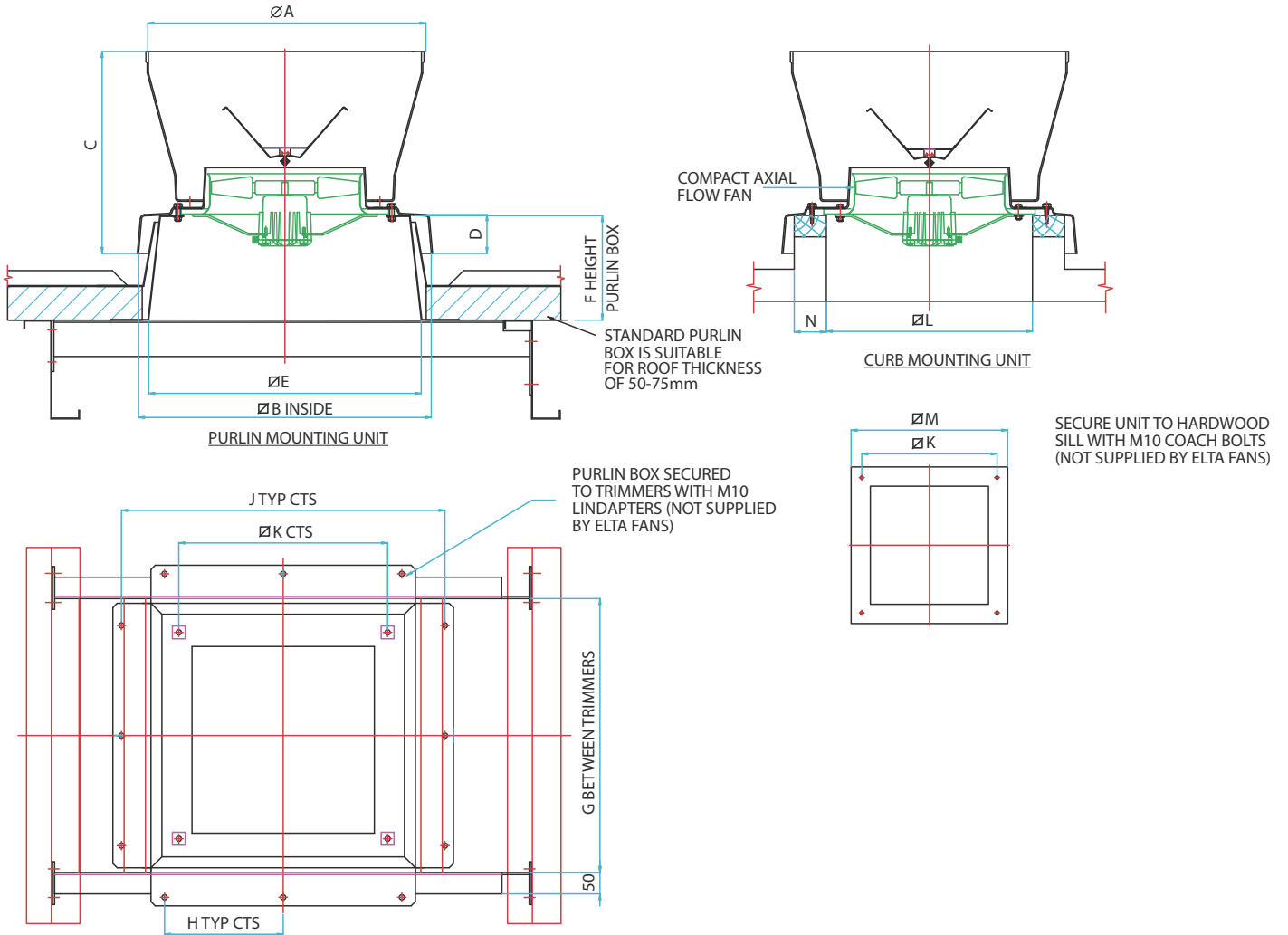
Typical Applications

Industrial units, hospitals, fume cupboard extract, spray booths and paint shops.

ROOF MOUNTED

Skyflow SSFV

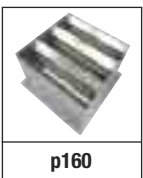
Dimensional Data



Product Code	A	B	C	D	E	F	G	H	J	K	L	M	N	Weight kg
SSFV31	650	684	740	85	610	240	636	250	750	500	460	610	75	17
SSFV35	650	684	740	85	610	240	636	250	750	500	460	610	75	20
SSFV40	768	784	525	90	730	250	756	300	870	600	550	700	75	28
SSFV45	768	784	525	90	730	250	756	300	870	600	550	700	75	39
SSFV50	981	934	660	100	860	250	886	350	1000	745	700	850	75	45
SSFV56	981	934	660	100	860	250	886	350	1000	745	700	850	75	55
SSFV63	1156	1054	7580	105	1000	250	1026	350	1140	870	830	980	75	55
SSFV71	1156	1054	7580	105	1000	250	1026	435	1140	870	830	980	75	64

Note: weights only include skyflow roof unit and compact fan.

Accessories



ROOF MOUNTED

Skyflow SSFV

Performance & Electrical Data



158

SINGLE Phase - 220V-240V / 50Hz

Product Code	Speed r/min	Airflow m ³ /s @ Static Pressure Pa.												Motor Electrical Data			Speed Control		Sound Level dBA @ 3m	
		0	10	20	30	40	50	60	80	100	120	140	160	FLC Amps	SC Amps	Input kW	Electronic	Transformer		
SSFV31/4-1	1390	0.51	0.49	0.46	0.44	0.42	0.39	0.36	0.28	0.20					0.90	1.45	0.09	EL31TK	TC12	46
SSFV35/4-1	1330	0.66	0.64	0.61	0.58	0.55	0.51	0.47	0.39	0.30	0.21				0.90	1.45	0.09	EL31TK	TC12	53
SSFV40/4-1	1375	1.11	1.08	1.04	1.01	0.98	0.94	0.91	0.82	0.69	0.50	0.38			1.80	3.60	0.25	EL31TK	TC14	54
SSFV45/6-1	850	0.88	0.81	0.74	0.66	0.57	0.45	0.32	0.17						1.02	2.00	0.12	EL31TK	TC12	50
SSFV45/4-1	1300	1.34	1.30	1.26	1.22	1.18	1.13	1.09	0.98	0.84	0.64	0.50			1.80	3.60	0.25	EL31TK	TC14	58
SSFV50/6-1	860	1.24	1.17	1.11	1.05	0.98	0.89	0.79	0.47	0.33	0.25				1.55	3.50	0.18	EL31TK	TC14	52
SSFV50/4-1	1350	1.91	1.87	1.82	1.77	1.73	1.68	1.63	1.54	1.44	1.34	1.22			3.60	10.8	0.55	EL61TK	TC18	60
SSFV56/6-1	875	1.71	1.66	1.61	1.55	1.49	1.42	1.33	0.95	0.76	0.65				2.20	5.50	0.25	EL31TK	TC14	56
SSFV56/4-1	1350	2.52	2.45	2.39	2.33	2.27	2.22	2.16	2.04	1.89	1.66	1.22			4.90	15.0	0.75	EL61TK	TC18	63
SSFV63/6-1	850	2.44	2.38	2.32	2.26	2.19	2.13	2.05	1.88	1.58	1.18	1.01			6.00	12.6	0.55	EL101	TC18	59
SSFV63/4-1	1310	3.59	3.52	3.45	3.37	3.29	3.21	3.12	2.92	2.70	2.44	2.12	1.70		7.90	19.8	1.10	-	TC110	67

Sound levels are average spherical free field values at 50% peak pressure for comparative purposes only.

Silencer Data

Product Code	Silencer Attenuation & Pressure Drop Data					
	600L		900L		1200L	
	dBA	ΔP Pa	dBA	ΔP Pa	dBA	ΔP Pa
SSFV31/4-1	-12	9	-15	11	-18	13
SSFV35/4-1	-13	9	-17	11	-20	13
SSFV40/4-1	-12	17	-17	21	-20	25
SSFV45/6-1	-12	4	-17	6	-20	7
SSFV45/4-1	-13	15	-18	19	-21	23
SSFV50/6-1	-8	5	-13	7	-14	8
SSFV50/4-1	-9	23	-14	29	-15	35
SSFV56/6-1	-10	10	-16	13	-17	15
SSFV56/4-1	-11	26	-16	33	-19	39
SSFV63/6-1	-9	14	-14	18	-16	21
SSFV63/4-1	-10	31	-16	39	-18	47

For explanation of silencer data see p107.

Skyflow SSFV

Performance & Electrical Data



THREE Phase - 380V-415V / 50Hz

Product Code	Speed r/min	Airflow m ³ /s @ Static Pressure Pa.													Motor Electrical Data			Speed Control	Sound Level dBA @ 3m
		0	10	20	30	40	50	60	80	100	120	140	160	200	FLC Amps	SC Amps	Input kW		
SSFV31/4-3	1390	0.51	0.49	0.46	0.44	0.42	0.39	0.36	0.28	0.20					0.50	1.15	0.12	TC33	46
SSFV35/4-3	1330	0.66	0.64	0.61	0.58	0.55	0.51	0.47	0.39	0.30	0.21				0.50	1.15	0.12	TC33	53
SSFV40/4-3	1375	1.11	1.08	1.04	1.01	0.98	0.94	0.91	0.82	0.69	0.50	0.38			1.40	4.50	0.37	TC33	54
SSFV45/6-3	850	0.87	0.81	0.74	0.67	0.60	0.51	0.41	0.13						0.68	1.70	0.18	TC33	50
SSFV45/4-3	1300	1.32	1.28	1.24	1.20	1.16	1.11	1.07	0.97	0.83	0.66	0.52			1.40	4.50	0.37	TC33	58
SSFV50/6-3	830	1.20	1.13	1.06	1.00	0.93	0.85	0.76	0.49	0.35					0.94	2.40	0.25	TC33	52
SSFV50/4-3	1320	1.86	1.82	1.77	1.73	1.68	1.64	1.59	1.50	1.39	1.28	1.15	0.95		1.75	6.20	0.55	TC33	60
SSFV56/6-3	830	1.66	1.60	1.55	1.49	1.43	1.36	1.27	0.93	0.76	0.65				0.94	2.40	0.25	TC33	56
SSFV56/4-3	1320	2.44	2.38	2.32	2.27	2.22	2.16	2.11	1.98	1.82	1.50	1.21			2.00	7.50	0.75	TC35	63
SSFV63/6-3	850	2.39	2.32	2.25	2.19	2.13	2.07	2.00	1.81	1.50	1.19				1.90	5.80	0.55	TC35	59
SSFV63/4-3	1320	3.85	3.81	3.77	3.73	3.68	3.64	3.59	3.50	3.41	3.32	3.22	3.13	2.91	4.30	15.5	1.5	TC35	69
SSFV71/6S-3	720	3.18	3.05	2.90	2.75	2.59	2.43	2.27							1.50	5.40	0.50	TC33	55
SSFV71/6D-3	880	3.57	3.48	3.39	3.28	3.17	3.04	2.90	2.58						3.40	12.3	1.1	TC35	60
SSFV71/4S-3	1380	4.93	4.82	4.70	4.58	4.46	4.33	4.20	3.92	3.58	3.19	2.71	2.25		4.30	15.5	1.5	TC35	69

Sound levels are average spherical free field values at 50% peak pressure for comparative purposes only.

Silencer Data

Product Code	Silencer Attenuation & Pressure Drop Data					
	600L		900L		1200L	
	dBA	ΔP Pa	dBA	ΔP Pa	dBA	ΔP Pa
SSFV31/4-3	-12	9	-15	11	-18	13
SSFV35/4-3	-13	9	-17	11	-20	13
SSFV40/4-3	-12	17	-17	21	-20	25
SSFV45/6-3	-12	5	-17	6	-20	8
SSFV45/4-3	-13	15	-18	18	-21	22
SSFV50/6-3	-8	7	-13	8	-14	10
SSFV50/4-3	-9	21	-14	26	-15	31
SSFV56/6-3	-10	9	-16	12	-17	14
SSFV56/4-3	-11	25	-16	31	-19	37
SSFV63/6-3	-9	14	-14	17	-16	20
SSFV63/4-3	-10	43	-16	54	-18	64
SSFV71/6S-3	-10	17	-16	21	-18	26
SSFV71/6D-3	-10	23	-16	29	-18	34
SSFV71/4S-3	-10	34	-17	43	-19	51

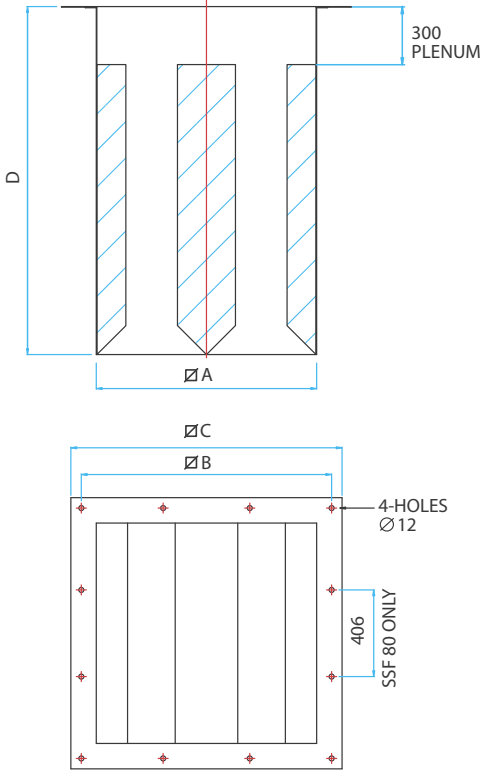
For explanation of silencer data see p107.

Skyflow SSFV Accessories



160

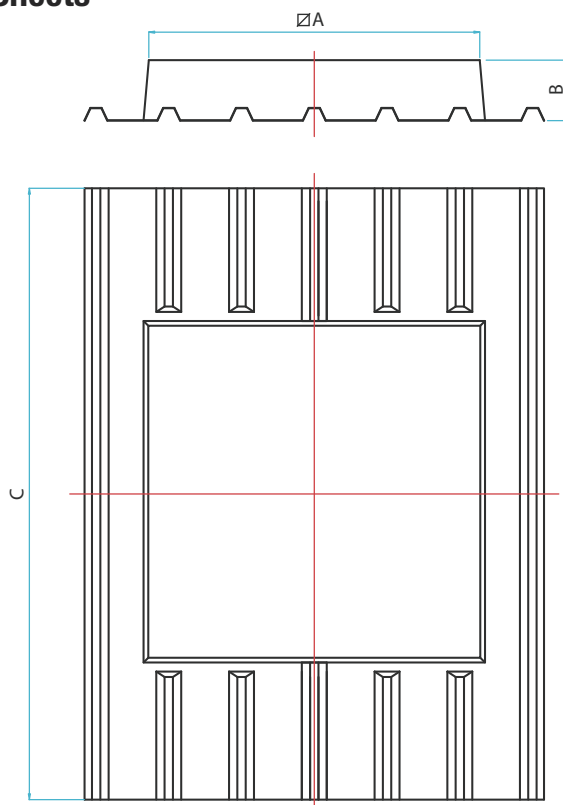
Drop In Silencers



Unit Size	Product Code	A	B	C	D	Airways	Weight kg
SSFV31/35	068-SFDS-0600-A	440	500	600	600	2	15
	068-SFDS-0900-A				900		20
	068-SFDS-1200-A				1200		25
SSFV40/45	068-SFDS-0600-B	530	600	650	600	2	17
	068-SFDS-0900-B				900		24
	068-SFDS-1200-B				1200		32
SSFV50/56	068-SFDS-0600-C	670	745	800	600	2	23
	068-SFDS-0900-C				900		34
	068-SFDS-1200-C				1200		43
SSVF63/71	068-SFDS-0600-D	810	870	940	600	3	27
	068-SFDS-0900-D				900		41
	068-SFDS-1200-D				1200		50

- For information on silencers and an explanation of the data, see p107
- Baffle type silencers
- Galvanised steel casing with perforated steel lining and baffles
- Infill is glass tissue faced high density mineral wool

Soaker Sheets



- Fire retardant glass reinforced plastic (GRP)
- UV stabilised

Product Code	A	B	C
039S-SP-31/35***	600	152	1830
039S-SP-40/45***	730	165	1830
039S-SP-50/56***	890	165	1830
039S-SP-63/71***	1010	165	1830

*** Add soaker panel profile to part code
Weights dependant on profile

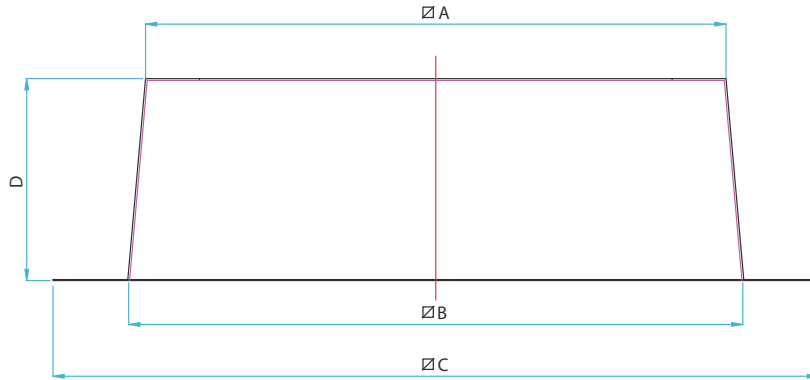
ROOF MOUNTED

Skyflow SSFV

Accessories



Purlin Boxes



Product Code	A	B	C	D	Weight kg
039B-PB31/35	570	610	790	240	9
039B-PB40/45	690	730	970	250	11
039B-PB50/56	820	860	1040	250	13
039B-PB63/71	960	1000	1180	250	15

• Pre-galvanised mild steel

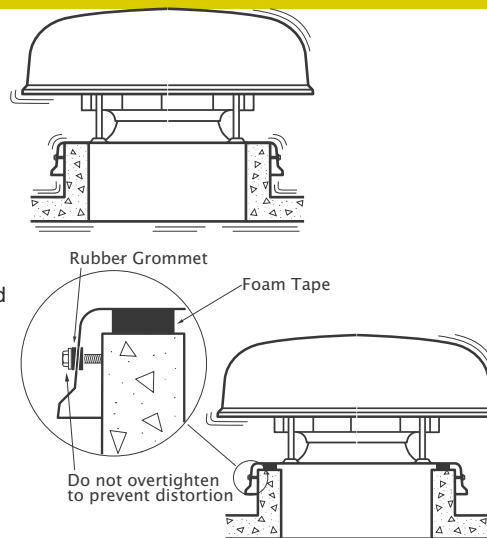
Isolation of roof mounted fans

DO NOT!

Do not mount roof mounted fans to upstands.

DO!

Do isolate roof mounted fans from the duct work, and upstand by using a foam tape between the top of the upstand and the fan. Where the fan is fixed to the upstand with bolt and screws use rubber / neoprene grommets.



ROOF MOUNTED