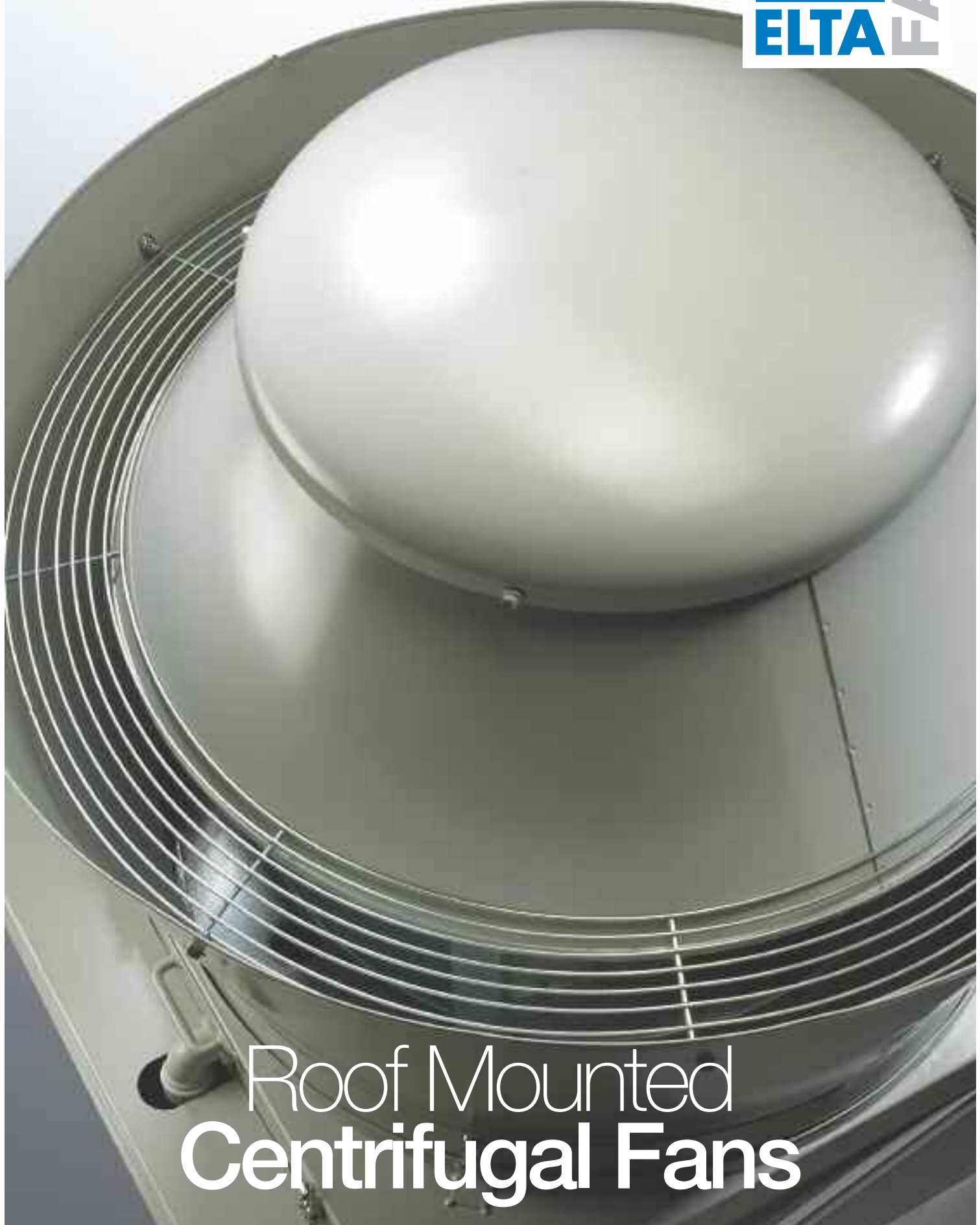


HERITAGE

SGE



Roof Mounted
Centrifugal Fans

Heritage SGE

Features & Benefits



The Heritage SGE range of vertical discharge centrifugal roof extract units has been developed to simplify cleaning and general maintenance and to assist in the collection of grease in applications such as fast food restaurants, commercial kitchens and process work where exhaust air is grease laden.

- 4 standard sizes from 400mm to 560 mm.
- Air Volume flow rates of up to 3.21m³/sec.
- Static Pressures of up to 800Pa.
- Horizontal mounting.
- Speed controllable.
- Motors are squirrel cage induction type.
- Suitable for operating temperatures of up to 50°C.
- Motors are protected to IP55 with Class F insulation to EN 60034-5.
- Galvanised mild steel with a powder coat finish.

Features & Benefits

Effective design - The housing incorporates a grease / water separator which allows excess rainwater to be plumbed away from the unit, while retaining the grease in a collector for later removal and environmental disposal.

Easy access - For maintenance access the unit is fitted with quick release toggle clamps which, when released, allows the unit to hinge open without the need to completely remove the cowl, and access is easily gained for cleaning.

Easy maintenance - The wind band can be easily removed by unlatching toggle clamps, allowing easy access to the impeller. Tilting the fan base assembly backwards provides ready access for cleaning the base.

Reliability – Motors have sealed for life bearings.

Mounting arrangement – The unit should always be mounted on a horizontal plane.

Accessories – Inverters

Tested to the very latest standards – SGE units are tested to ISO 5801:1997 (airside performance) and to BS 848 Pt 2:1985 (sound performance) meaning accurate, up to date information on performance and noise data that can be relied upon.

Quality assurance – All units are designed and manufactured with procedures as defined in BS EN ISO 9001: 2000.

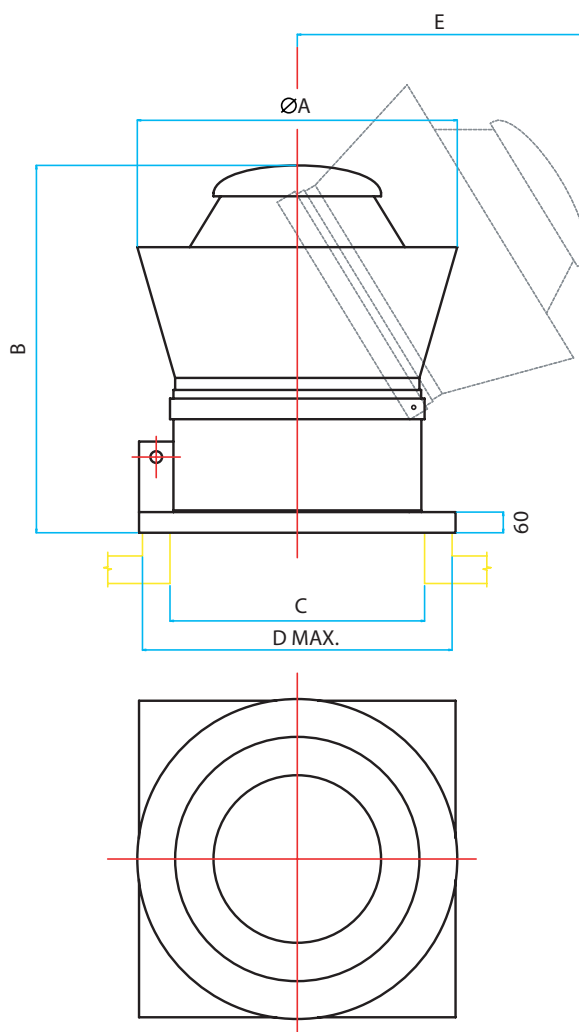
Warranty – Each SGE has a one year warranty.

Typical Applications

Commercial kitchen and catering establishments, service stations, fast food restaurants and installations where grease laden air is being extracted.

Heritage SGE

Dimensional Data



ROOF MOUNTED

Product Code	A	B	C	D	E	Weight kg
SGE400/4-3	667	870	540	620	820	88
SGE450/4-3	930	995	740	900	980	128
SGE500/4-3	930	995	740	900	980	153
SGE560/4-3	930	995	740	900	980	178

Accessories



Heritage SGE

Performance & Electrical Data



THREE Phase - 380V-415V / 50Hz

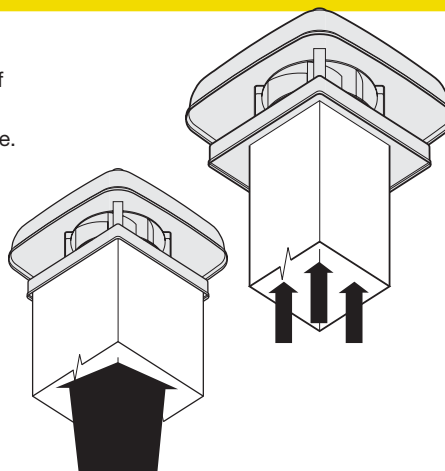
Product Code	Speed r/min	Airflow m ³ /s @ Static Pressure Pa.														Motor Electrical Data			Sound Level dBA @ 3m
		0	50	100	150	200	250	300	350	400	450	500	600	700	800	FLC Amps	SC Amps	Output kW	
SGE400/4-3	1440	1.12	1.09	1.05	1.01	0.95	0.88	0.79	0.67	0.49						1.50	9.0	0.55	54
SGE450/4-3	1440	1.58	1.54	1.48	1.43	1.37	1.30	1.23	1.15	1.05	0.94	0.79				2.10	12.6	0.75	56
SGE500/4-3	1440	2.22	2.14	2.07	2.00	1.92	1.85	1.77	1.69	1.61	1.52	1.41	1.11			3.40	20.4	1.50	60
SGE560/4-3	1440	3.21	3.13	3.06	2.98	2.90	2.82	2.74	2.65	2.55	2.45	2.35	2.11	1.82	1.41	7.10	42.6	3.00	65

Sound levels are average spherical free field values at 50% peak pressure for comparative purposes only.

Mounting of roof units to ductwork

DO NOT!

Don't connect to the 'eye' of the base as this increases pressure losses on the intake.



DO!

Size inlet duct to fit roof unit overflashing.

ROOF MOUNTED

Heritage SGE

Sound Data



SGE - SINGLE Phase

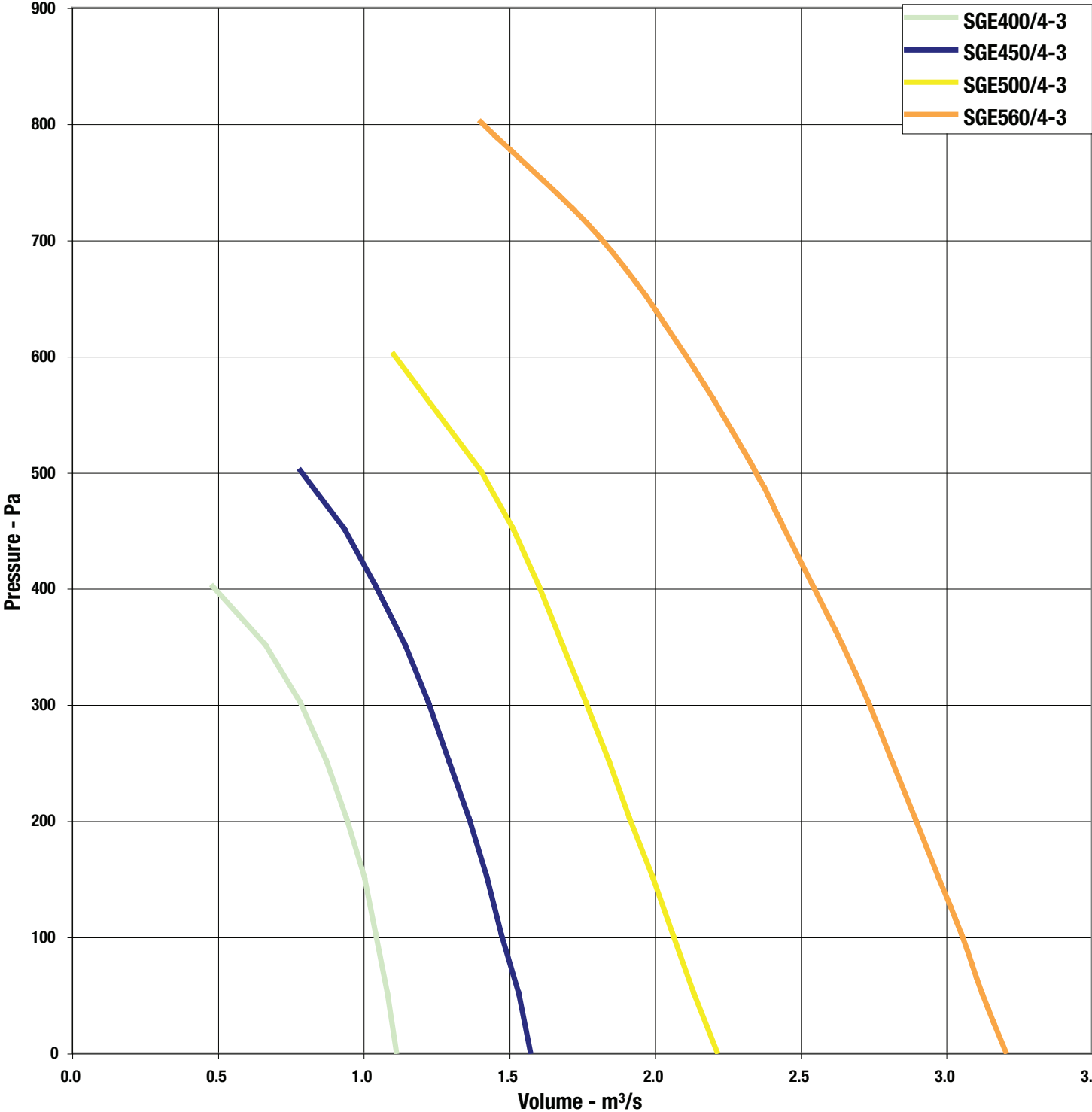
Product Code	63Hz	125Hz	250Hz	500Hz	1kHz	2kHz	4kHz	8kHz	dBA @ 3m
SGE400/4-3	82	80	75	72	65	66	66	59	54
SGE450/4-3	84	82	77	74	68	69	69	65	56
SGE500/4-3	87	87	82	76	73	73	73	70	60
SGE560/4-3	91	92	88	79	78	77	77	75	65

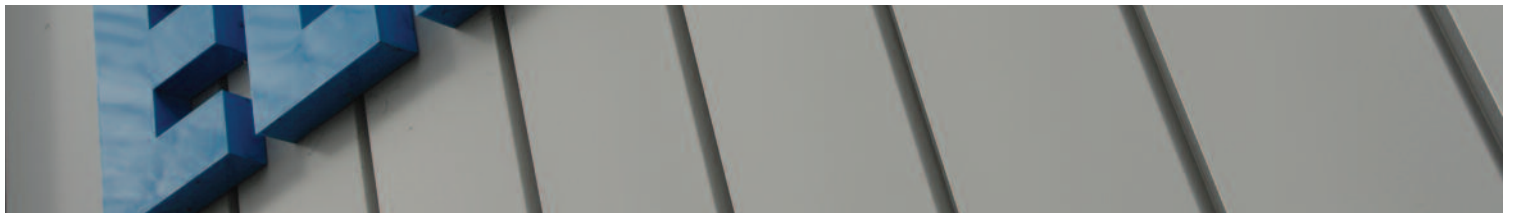
Heritage SGE

Performance Curves



4 Pole 3Ph Range





Elta Fans Ltd - Applied Technology

17 Barnes Wallis Road,
Segensworth East Industrial Estate,
Fareham, Hampshire, P015 5ST, United Kingdom.

Visit: eltafans.com

e-mail: mailbox@eltafans.co.uk

Applied Technology:

Tel: +44 (0) 1489 566500

Fax: +44 (0) 1489 566555

Building Services:

Tel: +44 (0) 1384 275800

Fax: +44 (0) 1384 275810

Export:

Tel: +44 (0) 1489 566500

Fax: +44 (0) 1489 566555